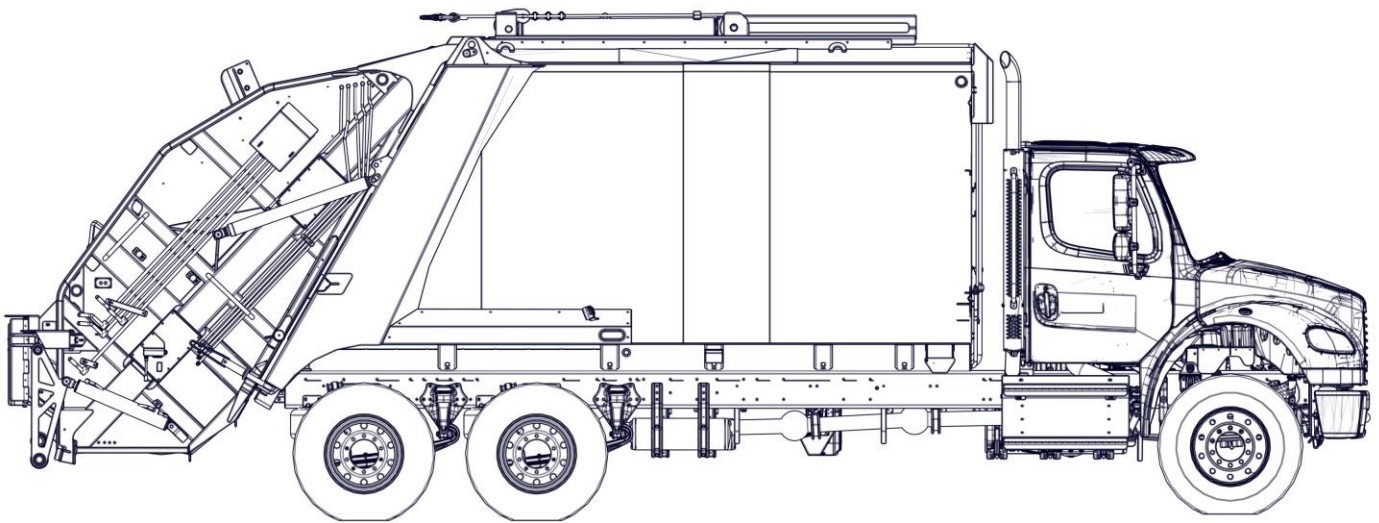


Pac-Tech[®]

A DIVISION OF CON-TECH MANUFACTURING, INC.

Rear Loader Replacement Parts

OEM Parts for PTM Packers & Replacement Parts For MTM Packers



20, 25, 28, 32 YD XD Rear Loader

Con-Tech Manufacturing Inc.

Ph. (507)-374-2239

Fax. (507)-374-2548

www.ptpackers.com



Pac-Tech®
A DIVISION OF CON-TECH MANUFACTURING, INC.

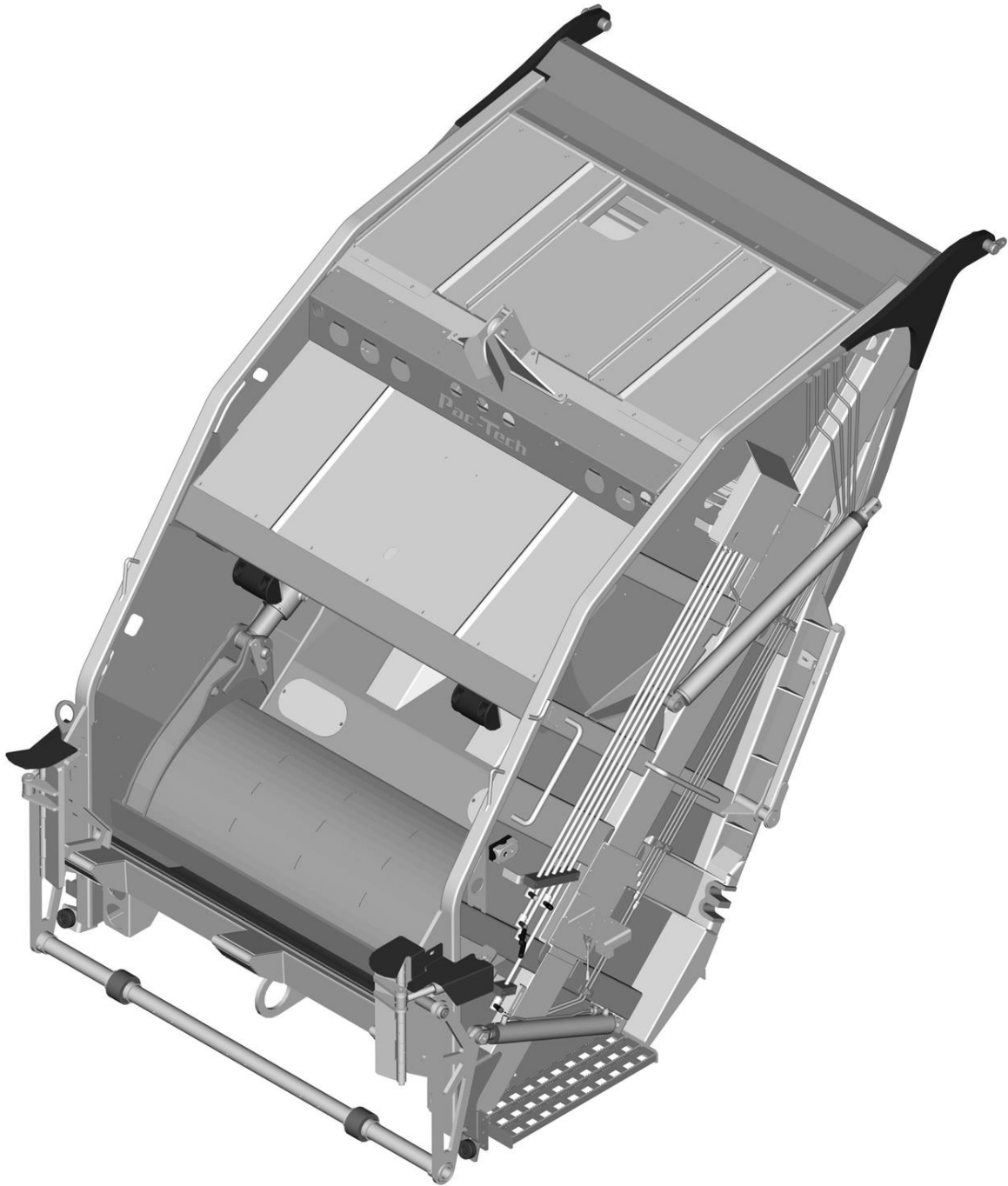
Table of Contents

TAILGATE	1
<hr/>	
TAILGATE ASSEMBLY	2
SLIDE	4
SWEEP	5
SLIDE & SWEEP ACCESSORIES	6
CONTROL LEVER ASSEMBLY	7
TIPPER LIFT ARM ASSEMBLY	8
BANG BAR (OPTIONAL)	9
TAILGATE TURNBUCKLE	9
TAILGATE ACCESSORIES	10
TAILGATE HOPPER LINER	11
LOAD EDGES	12
<hr/>	
NO TIPPER LOAD EDGE	13
SINGLE TIPPER LOAD EDGE	13
PASSENGER OFFSET LOAD EDGE	14
DOUBLE TIPPER LOAD EDGE	14
DOUBLE EUROPEAN TIPPER LOAD EDGE	15
SINGLE D6220WC LOAD EDGE	15
CART TIPPERS	16
HYDRAULIC GUIDE LATCH	17
BODY	18
<hr/>	
EJECTOR ASSEMBLY	18
REEVING CYLINDER ASSEMBLY	20
CABLE GUIDE ASSEMBLY	22
LADDER (OPTIONAL)	23
FENDERS & MUD FLAPS	24
MISCELLANEOUS	25
ELECTRONICS	26
<hr/>	
CAB CONTROLS	27
LIGHTS	28
ELECTRICAL COMPONENTS	30
WIRE HARNESSSES	31

Table of Contents

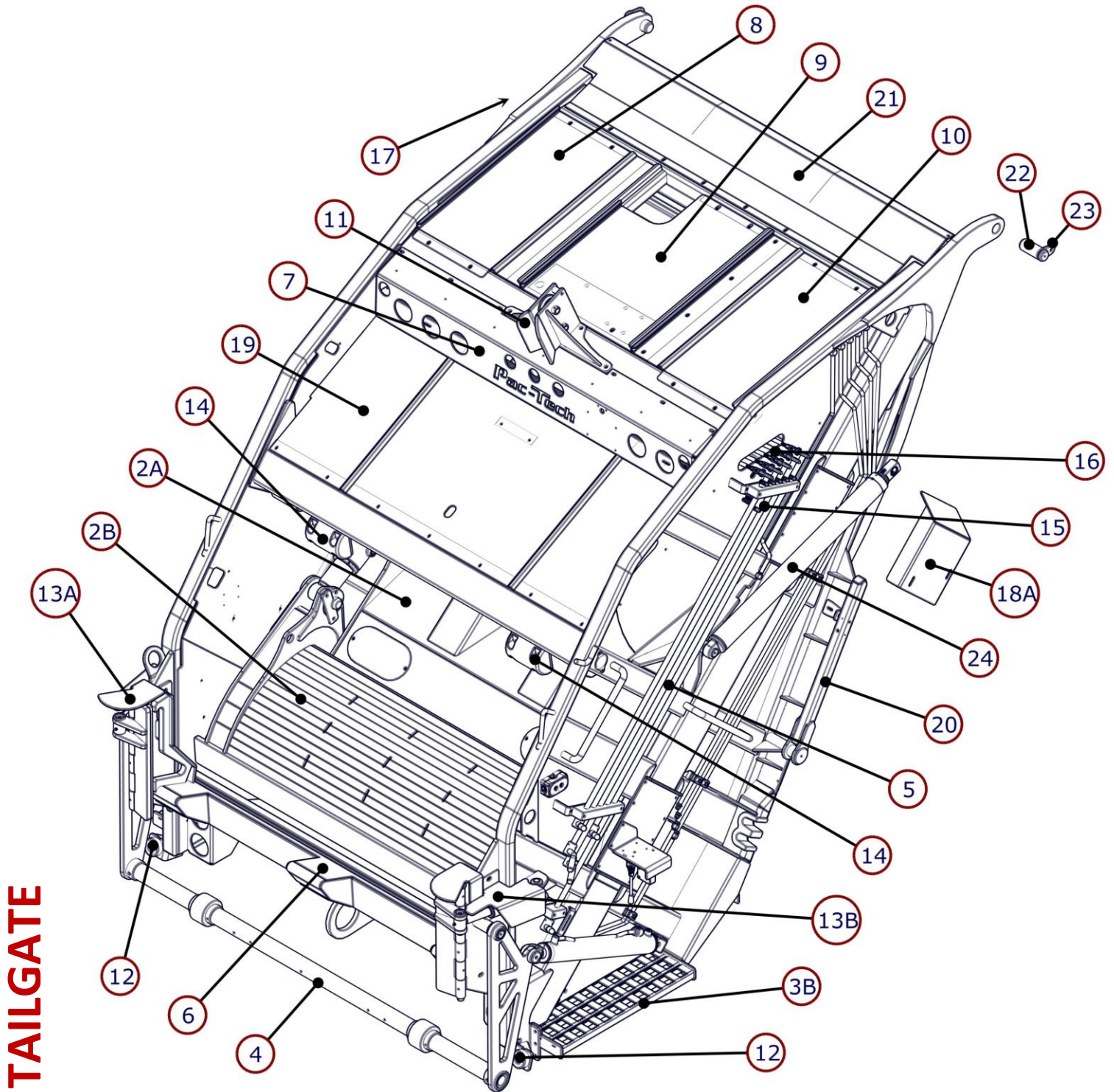
HYDRAULICS	32
OIL RESERVOIR & FILTER	33
PTO & PUMP	34
TAILGATE HYDRAULIC TUBES	35
ROOF HYDRAULIC TUBES	38
FRONT OF BODY HYDRULIC TUBES	39
FRONT VALVE HYDRAULIC TUBES	40
HYDRAULIC VALVES & BLOCKS	41

TAILGATE



TAILGATE 1

TAILGATE ASSEMBLY



TAILGATE

2

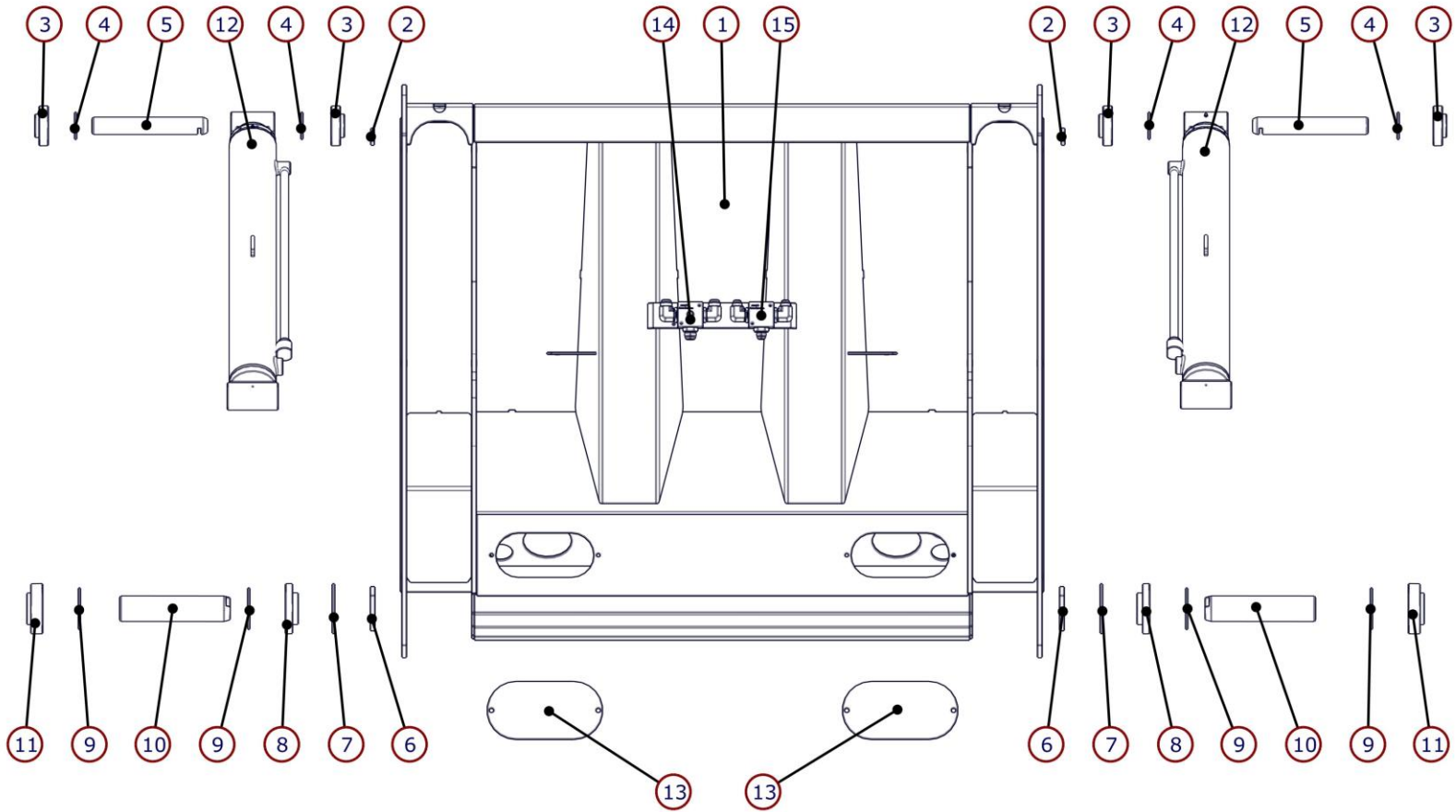
TAILGATE ASSEMBLY

ITEM NO.	PTM #	MTM #	DESCRIPTION	QTY.
1	5270471	-	RL, 3.5YD TG, WELDMENT	1
2	5270220	0670185	SLIDE SWEEP ASSEMBLY	1
2A	5270533	0605740	SLIDE (PAGE 4)	1
2B	-	0603450	SWEEP (PAGE 5)	1
3A	5270520	-	RL, TG LH STEP	A/R
-		-	RL, TG LH FOLD STEP	A/R
3B	5270521	-	RL, TG RH STEP	A/R
-		-	RL, TG RH FOLD STEP	A/R
4	-	-	TIPPER LIFT ARM ASSEMBLY (PAGE 8)	1
5	5270163	-	RL, CONTROL LEVER ASSEMBLY (PAGE 7)	1
6	NA	-	BOLT ON LOAD EDGES (PAGE 13 - 15)	A/R
7	5270295	-	REAR UPPER LIGHT PANEL	1
8	5270736	-	RL, TG, TOP PANEL LH	1
9	5270738	-	RL, TG, TOP PANEL MIDDLE,	1
10	5270737	-	RL, TG, TOP PANEL RH	1
11	5270351	0604035	CABLE GUIDE WELDMENT (PAGE 22)	1
12	9350051	-	BUMPER ROUND RECESS, 3.188 X 1.25	2
13A	5270733	-	RL, HYD GUIDE, PIVOT COVER RH, GEN 2	1
13B	5270732	-	RL, HYD GUIDE, PIVOT COVER LH, GEN 2	1
14	5870112	0602035	CONTAINER RUBBER BUMPER	2
15	715008D	-	SWITCH - OVERMOLDED PROX, CTM, W/ DEUTSCH CONNECTOR	1
16	5270164	1506645	RL, TG, CONTROL LINKAGE	5
17	9450419	-	SWITCH - PROX, 3 WIRE, LONG BARREL, 18MM	1
18A	5270427	0605232	RL, TG CONTROL LINKAGE COVER	1
18B	5270428	0605232	RL, TG CONTROL LINKAGE COVER	1
19	5270173	-	RL, TG SLIDE WEATHER GUARD, V-BEND	1
20	5270505	-	RL, TG PROP STAND WELDMENT	2
21	5270748	-	RL, TG FRONT NOSE WELDMENT, GEN 2	1
22	5270204	-	TG PIVOT PIN	2
23	5270207	-	TG PIVOT PIN KEEPER	2
24	9250500	1401204	CYLINDER, RL, TAILGATE LIFT	2
-	9250151	1432532	CYLINDER, RL, TAILGATE LIFT 3.5	2

TAILGATE

3

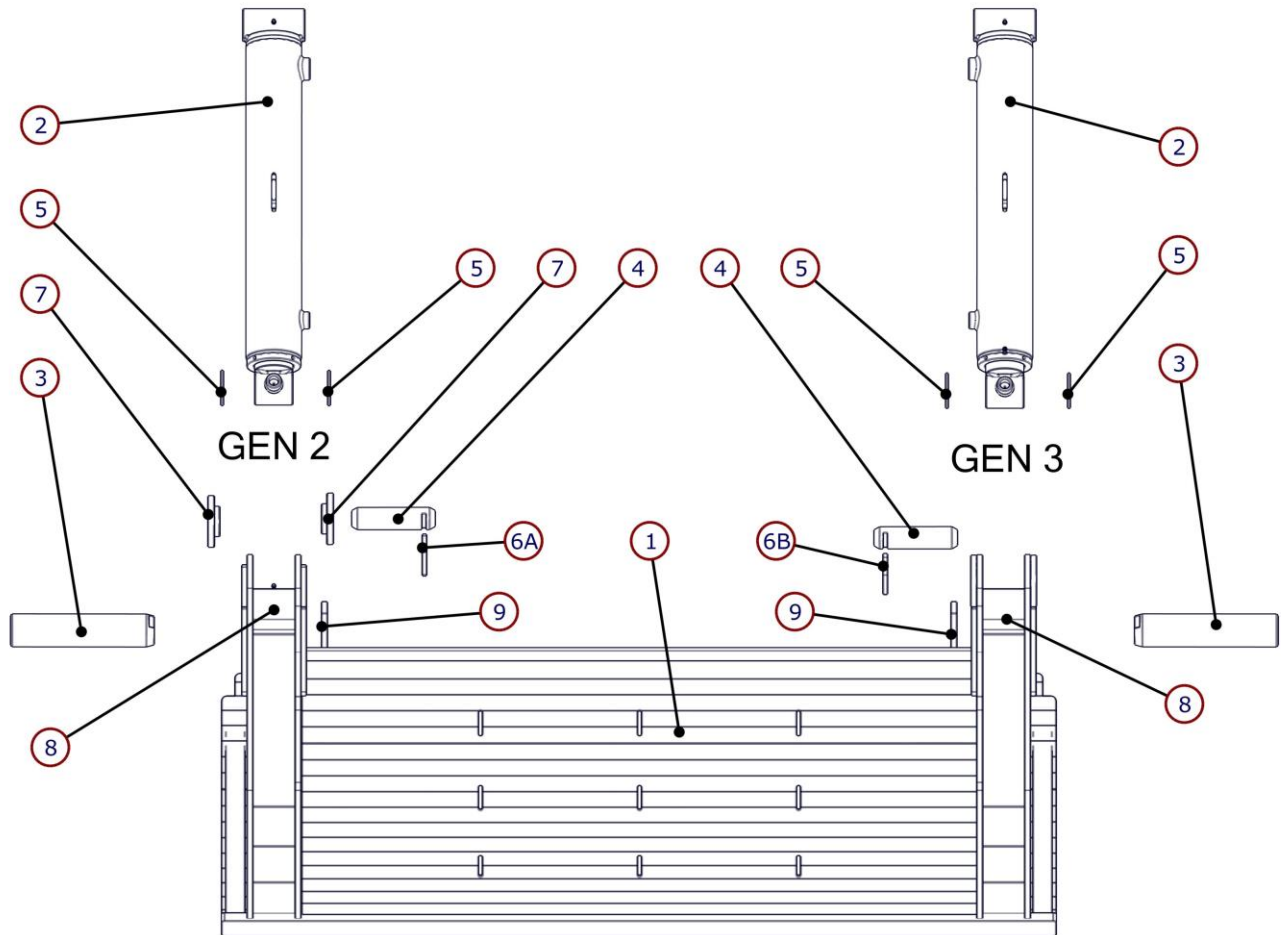
SLIDE



4 TAILGATE

ITEM NO.	PTM #	MTM #	DESCRIPTION	QTY.
1	5270533	0605740	SLIDE WLDT BOLT IN BUSHING(BIB)	1
2	5270191	N/A	SWEEP PIN KEEPER 2.5"	2
3	5270214	N/A	SLIDE CYL SHOE BUSHING	4
4	5270217	0603783	NYLATRON THRUST WASHER 2"	4
5	5270202	1320832	SLIDE SHOE CYL PIN	2
6	5270541	N/A	SWEEP PIVOT PIN KEEPER, BIB	2
7	5270619	N/A	SLIDE, FLANGE WASHER	2
8	5270215	N/A	SLIDE SWEEP PIVOT INNER BUSHING	2
9	5270218	0601205	NYLATRON THRUST WASHER 3"	4
10	5270200	1320838	SWEEP MAIN PIVOT PIN	2
11	5270216	N/A	SLIDE SWEEP PIVOT OUTER BUSHING	2
12	9250510	1419165	SLIDE CYL	2
13	5270258	N/A	SLIDE ACCESS LID	2
14	9450553	N/A	ASSY, RL SWEEP TEE -16 MJIC 90	1
15	9450552	N/A	ASSY, RL SWEEP TEE -12 MJIC 90	1

SWEEP



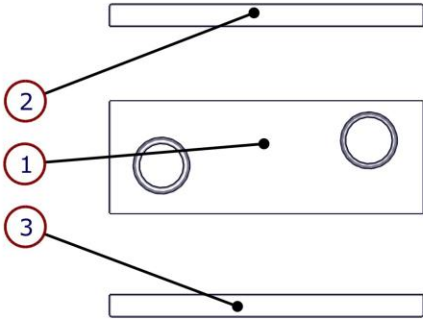
ITEM NO.	PTM #	MTM #	DESCRIPTION	QTY.
1	5270534	0603450	SWEEP WELDMENT, GEN 2 (BOLT IN BUSHING)	1
-	5270892	0603450	SWEEP WELDMENT. GEN 3	1
2	9250505	1419921	SWEEP CYL	2
3	5270200	1320838	SWEEP MAIN PIVOT PIN	2
4	5270201	1320837	SWEEP CYL ROD PIN	2
5	5270217	0603783	NYLATRON THRUST WASHER 2"	4
6A	5270191	-	SWEEP PIN KEEPER 2.5" (FOR GEN 2)	1
6B	5270896	-	RL, SWEEP, PIN KEEPER, BIB WELD (FOR GEN 3)	1
7	5270538	-	SWEEP CYL BOLT IN BUSHING (FOR GEN 2)	2
8	5270269	603410	SWEEP PIVOT BUSHING ASSEMBLY	2
9	5270541	-	SWEEP PIVOT PIN KEEPER, BIB	2

TAILGATE 5

SLIDE & SWEEP ACCESSORIES

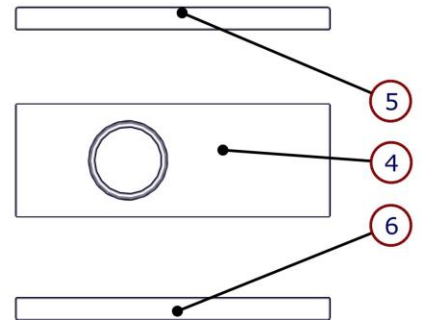
UPPER SLIDE SHOE ASSEMBLY

PTM # 5270231



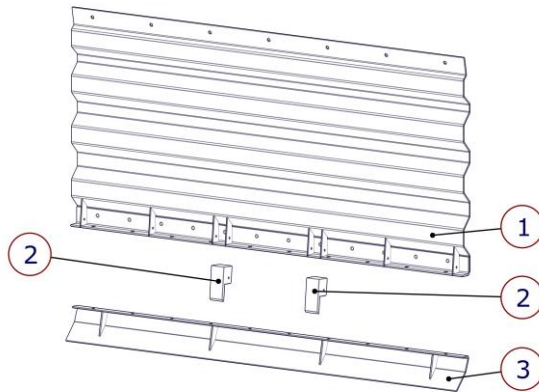
LOWER SLIDE SHOE ASSEMBLY

PTM # 5270232



ITEM NO.	PTM #	MTM #	DESCRIPTION	Qty
1	5270242	605487	SLIDE SHOE UPPER 2 HOLE WLDT	1
2	5270235	1100343	SLIDE SHOE UPPER 2 HOLE NYLATRON	1
3	5270236	605482	SLIDE SHOE LOWER 2 HOLE UHMW	1
4	5270243	605475	SLIDE SHOE LOWER 1 HOLE WLDT	1
5	5270237	605484	SLIDE SHOE UPPER 1 HOLE NYLATRON	1
6	5270238	1100345	SLIDE SHOE LOWER 1 HOLE UHMW	1

WIPER / SCRAPER



ITEM NO.	PTM #	DESCRIPTION	QTY.
1	5270169	RL, TG WIPER WLDT	1
2	5270292	WIPER UHMW PNL BLOCKS	2
3	5270290	WIPER SCRAPER	1
4	-	1/2-13 BOLT	10
5	-	1/2-13 NUT	10
6	-	SPRING	10

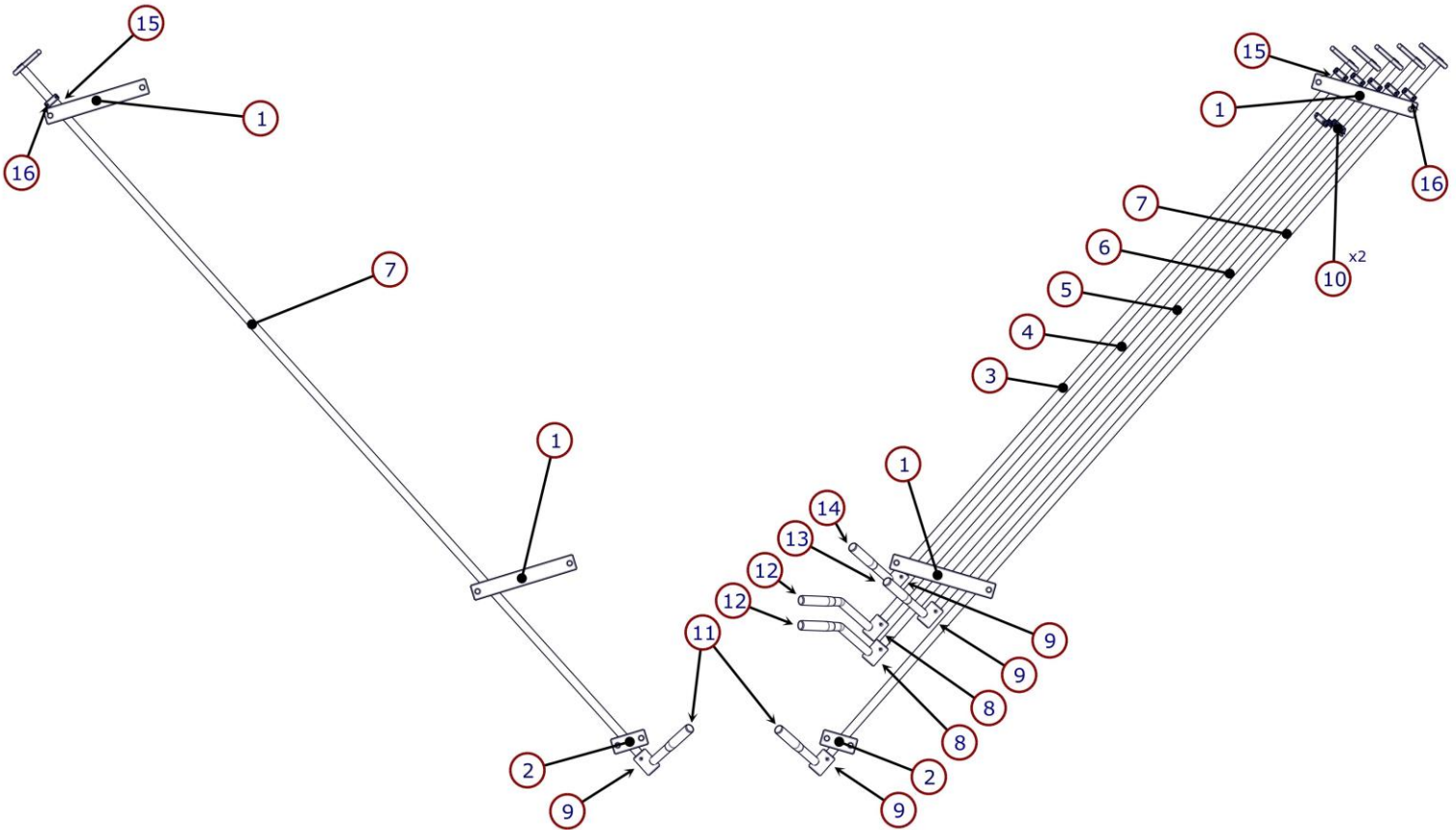
TAILGATE

6

CONTROL LEVER ASSEMBLY

STREET SIDE CONTROLS

CURB SIDE CONTROLS

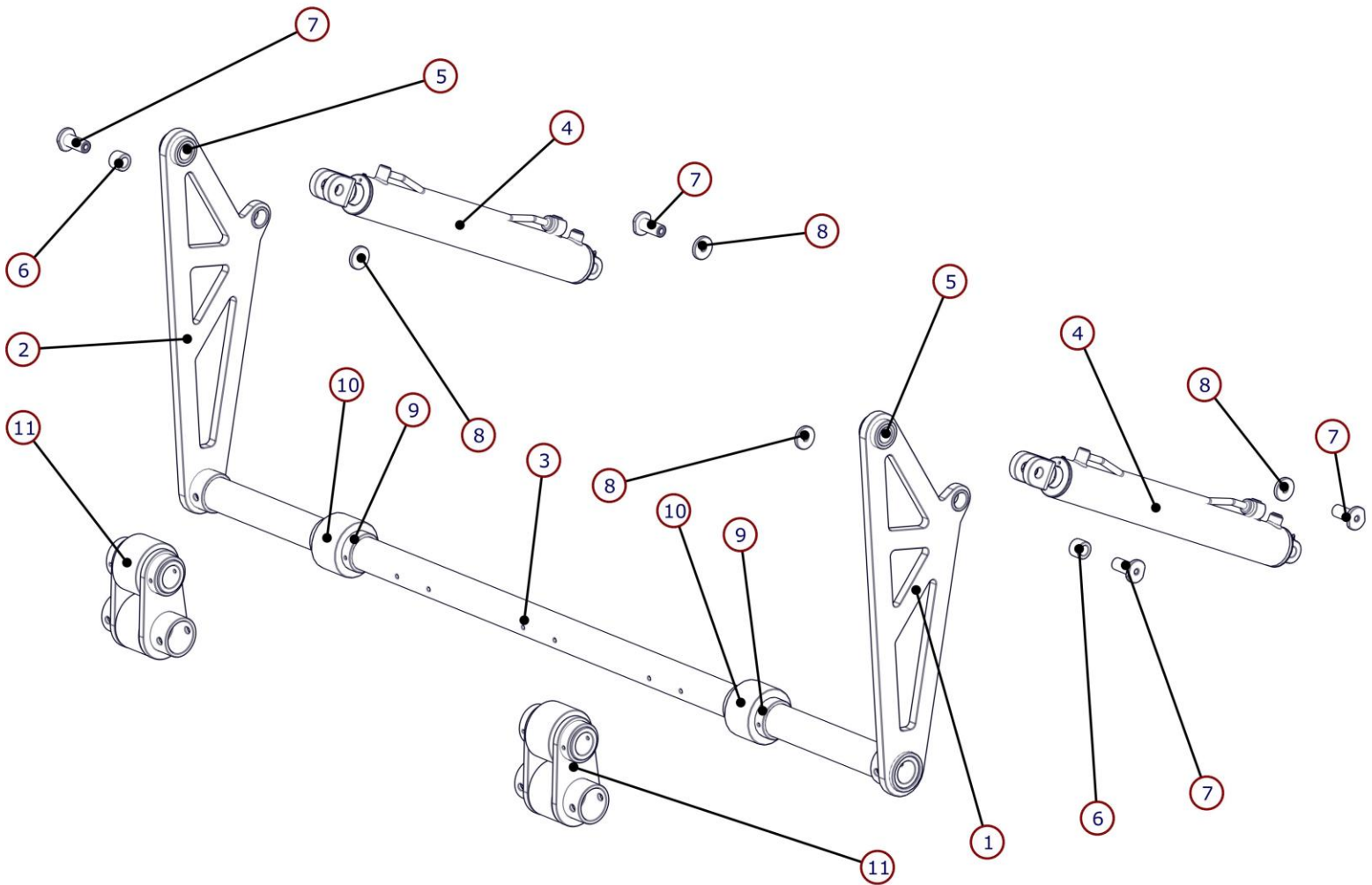


ITEM NO.	PTM #	MTM #	DESCRIPTION	QTY
1	5270244	0603882	UHMW LINKAGE BLOCK 5 HOLE	4
2	5270246	NA	UHMW LINKAGE BLOCK 1 HOLE	2
3	5270108	0604885	RL, TG, REEVING CONTROL ROD WLDT (71")	1
4	5270147	0604886	RL, TG, SLIDE CONTROL ROD WLDT (77.5")	1
5	5270149	0604887	RL, TG, SWEEP CONTROL ROD WLDT (81")	1
6	5270109	0604888	RL, TG, KICKBAR CONTROL ROD WLDT (76")	1
7	5270151	1104202	RL, TG, CART TIPPER CONTROL ROD WLDT (96")	2
8	5270145	0602275	RL, BENT CONTROL LEVER WLDT	2
9	5270146	0602274	RL, STRAIGHT CONTROL LEVER WLDT	4
10	5270125	NA	RL, THROTTLE TRIGGER WLDT	2
11	5270600	0120502	RUBBER HANDLE BLACK	2
12	5270601	0601397	RUBBER HANDLE RED	2
13	5270602	0120501	RUBBER HANDLE BLUE	1
14	5270603	NA	RUBBER HANDLE YELLOW	1
15	5270529	NA	RL, 3/4" CONTROL LINKAGE SPACER	6
16	5270124	NA	RL, THROTTLE TRIGGER COLLAR	6

TAILGATE 7

TIPPER LIFT ARM ASSEMBLY

PTM # 5270516



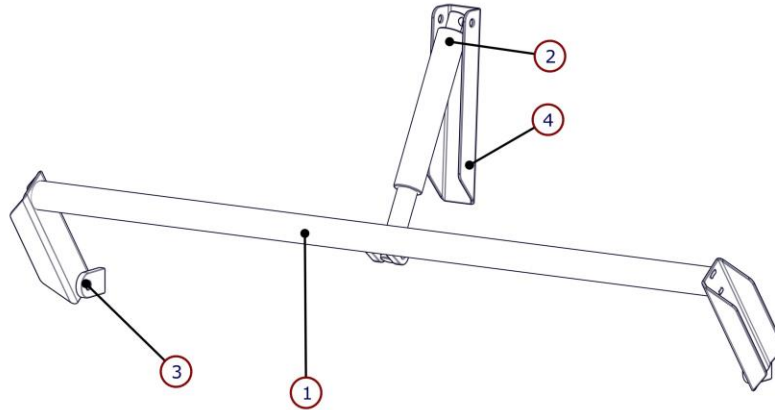
TAILGATE

8

ITEM NO.	PTM #	MTM #	DESCRIPTION	QTY
1	5270400	605025	ARM- TIPPER LIFT LH 32" ASSEMBLY	1
	5270750	-	ARM - TIPPER LIFT LH 31.5" ASSEMBLY	1
2	5270401	0605030	ARM- TIPPER LIFT RH 32" ASSEMBLY	1
	5270751	-	ARM - TIPPER LIFT RH 31.5" ASSEMBLY	1
3	5270630	1238145	RL, TUBE, TPR BAR, 4-ROLLER	1
4	9250501	1109370	KICK BAR CYL	2
5	5270396	0604003	BUSHING- ARM MAIN PIVOT	2
6	5270397	0604004	BUSHING- ARM ROD PIVOT	2
7	5270402	1320844	PIN, TPR, CYL ROD END	4
8	5270403	601712	WASHER, FLT .62 X 2.00 X .25	4
9	5270406	0601233	TIPPER LOCATOR ROLLER	4
10	5270407	0601235	ROLLER, LIFT BAR	2
11	5270634	N/A	RL, ASSEMBLY, BOLT ON TIPPER ROLLER RISER HD	2

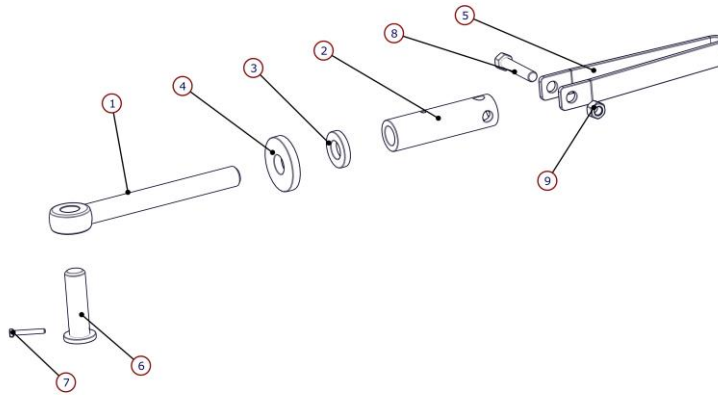
BANG BAR (OPTIONAL)

PTM # 9250570



ITEM NO.	PTM #	MTM #	DESCRIPTION	QTY.
1	9250571	-	BANG BAR - TUBE ASSEMBLY	1
2	9250572	-	BANG BAR - CYLINDER	1
3	9250573	-	BANG BAR - TUBE PIVOT PLATE	2
4	9250574	-	BANG BAR - CYLINDER UPPER MOUNT	1
5	9250575	-	BANG BAR - ALIGNMENT BRACKET (NOT SHOWN)	1

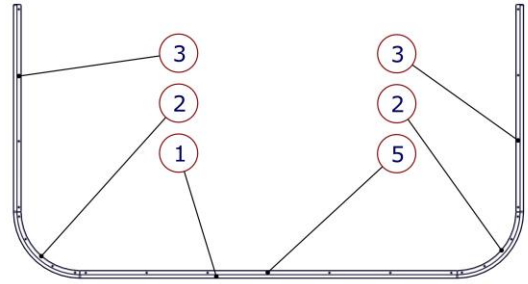
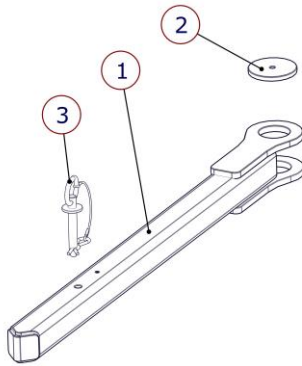
TAILGATE TURNBUCKLE



ITEM NO.	PTM #	MTM #	DESCRIPTION	QTY.
1	5070994	0603895	RL, STEEL ROD END	1
2	5070942	0603893	RL, TURNBUCKLE TUBE	1
3	5070943	0605694	RL, TURNBUCKLE BRASS SPACER	1
4	5070944	0603889	RL, TURNBUCKLE METAL SPACER	1
5	5070945	0603892	RL, TURNBUCKLE HANDLE STRAP	1
6	5070946	0623215	RL, TURNBUCKLE PIN WLDT	1
7	-	N/A	COTTER PIN	1
8	9000018	N/A	5/8-18X3.5" HEX BOLT	1
9	9000019	N/A	5/8-18 HEX NUT	1

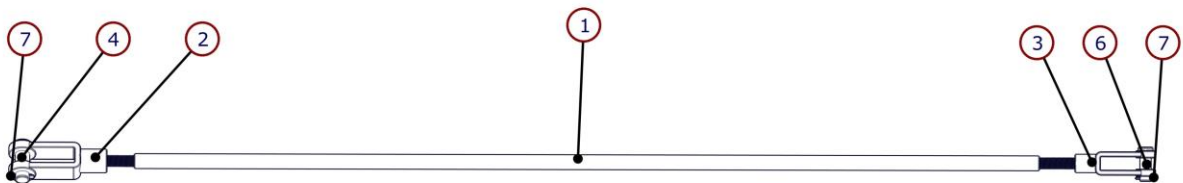
TAILGATE 9

TAILGATE ACCESSORIES



ITEM NO.	PTM #	DESCRIPTION	QTY.
1	5270505	RL, TG PROP STAND W/DT	1
2	5270501	RL, TG PROP STAND PIVOT WASHER	1
3	705093	PIN - PROP STAND W/ COTTER PIN AND CABLE	1

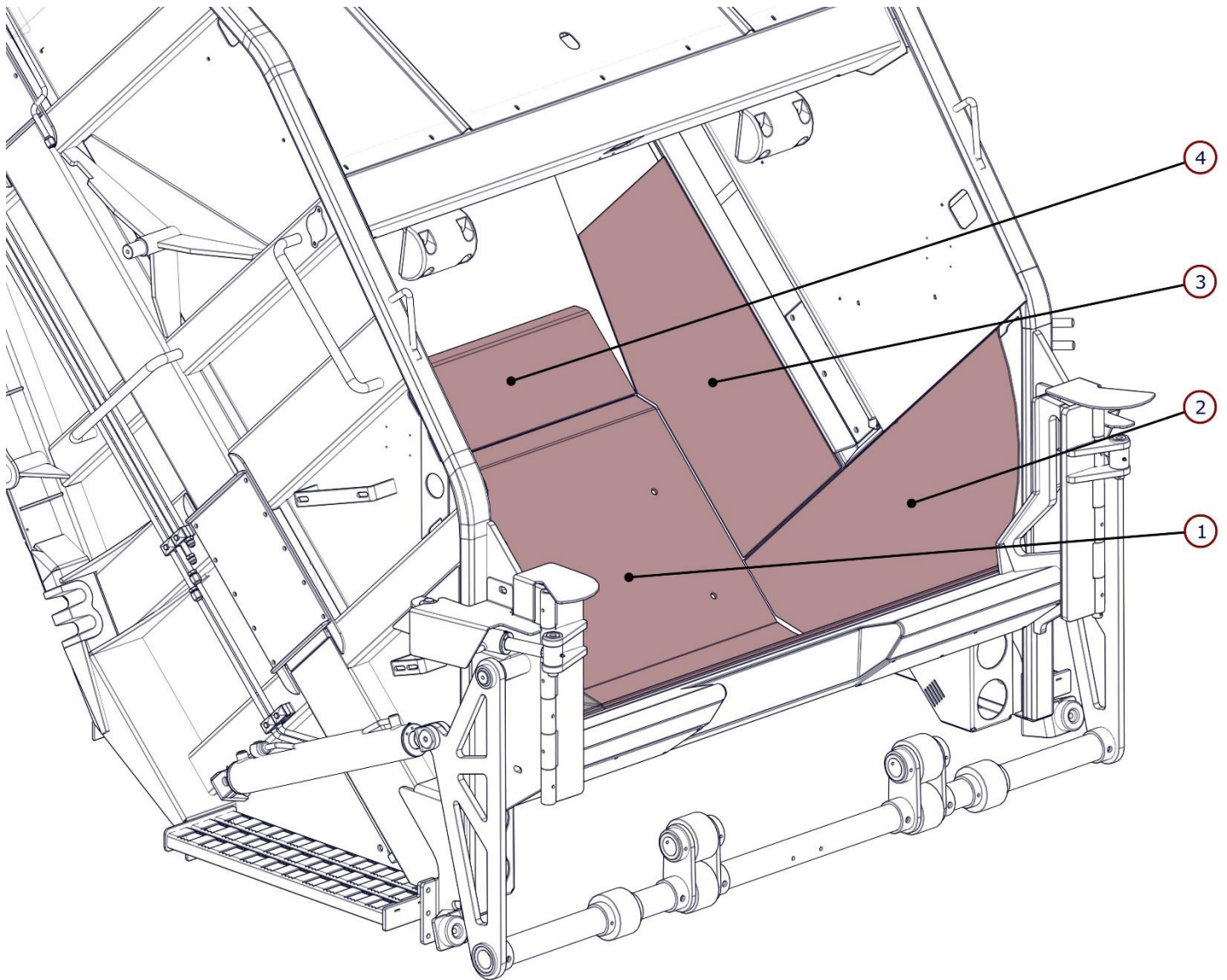
ITEM NO.	PTM #	DESCRIPTION	QTY.
1	9650004	TAILGATE SEAL	1
2	5870073	REAR LOADER TAILGATE SEAL CORNER PLT	2
3	5870074	REAR LOADER TAILGATE SEAL SIDE PLT	2
4	5870075	REAR LOADER TAILGATE SEAL CENTER PLT	1



ITEM NO.	PTM #	DESCRIPTION	QTY.
1	9000008	TAILGATE CONTROL TIE ROD	1
2	9000009	1/2" CLEVIS	1
3	9000010	5/16" CLEVIS	1
4	705076	1/2" CLEVIS PIN	1
5	9000011	3/8-24 HEX JAM NUT	2
6	9000012	5/16" CLEVIS PIN	1
7	9000013	1/8" COTTER PIN	2

10 TAILGATE

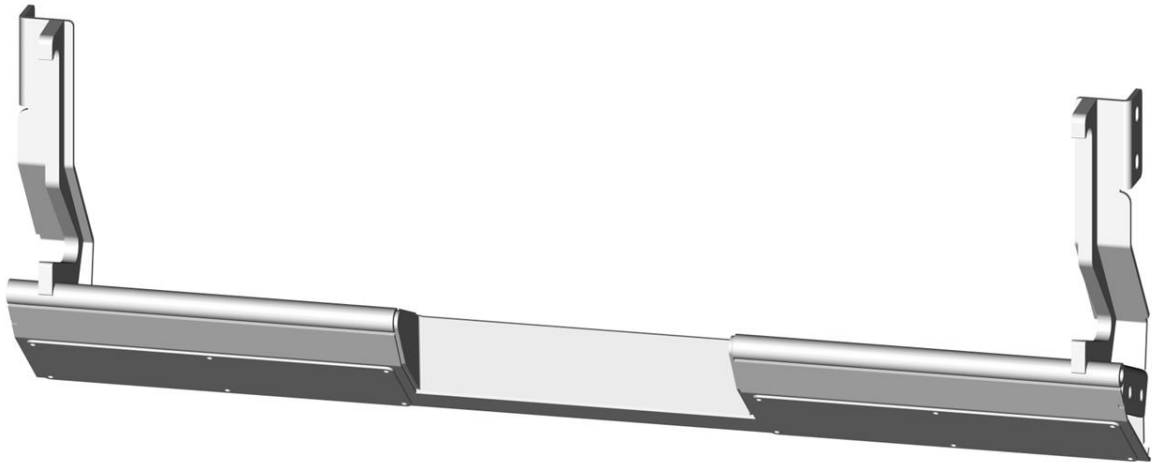
TAILGATE HOPPER LINER



ITEM NO.	PTM #	DESCRIPTION	QTY.
1	5270799	LINER, RL, HOPPER BOTTOM 3/16" AR 200	1
2	5270797	LINER, LWR TG, 3/16" - AR 400	2
3	5270798	LINER, UPR TG, 3/16" AR-400	2
4	5071409	LINER- TAPERED FLOOR SHLEF, 1/4"- AR 200	1

TAILGATE
11

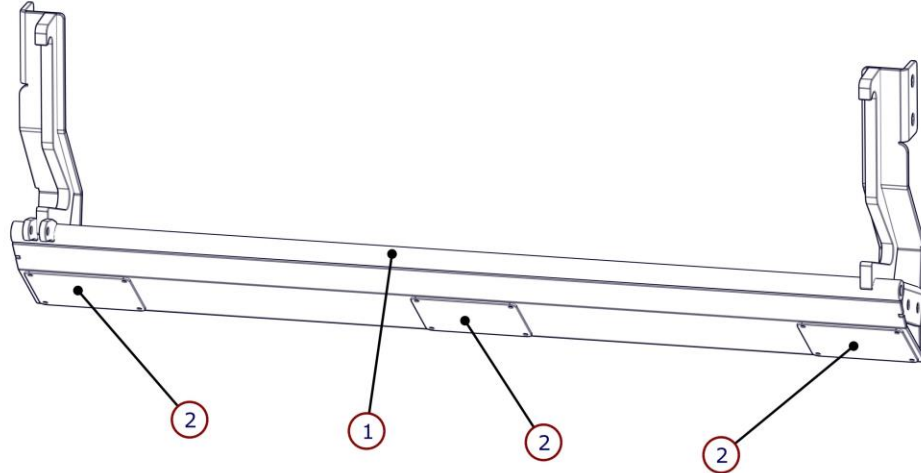
LOAD EDGES



12 LOAD EDGES

NO TIPPER LOAD EDGE

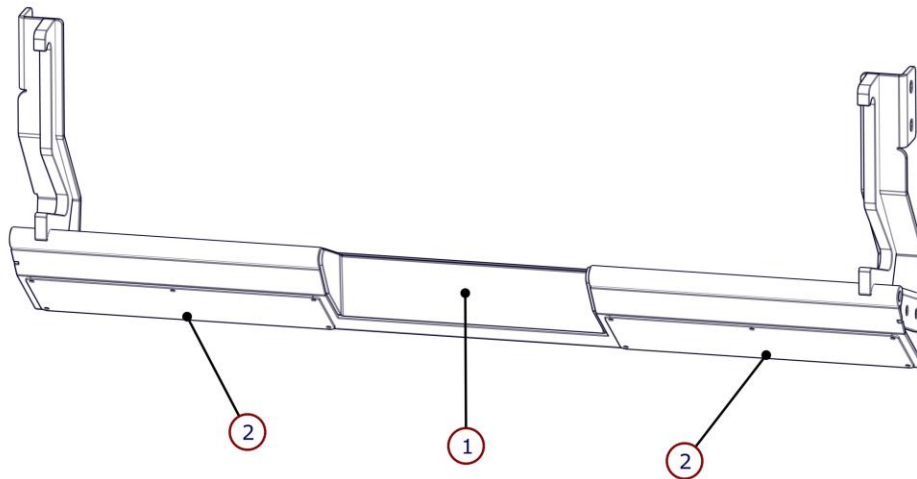
PTM # 5270511



ITEM NO.	PTM #	DESCRIPTION	QTY.
1	5270490	BOLT ON LOAD EDGE NO TIPPER WLDT	1
2	5270483	DOUBLE CART TIPPER EDGE ACCESS PANEL	3

SINGLE TIPPER LOAD EDGE

PTM # 5270512

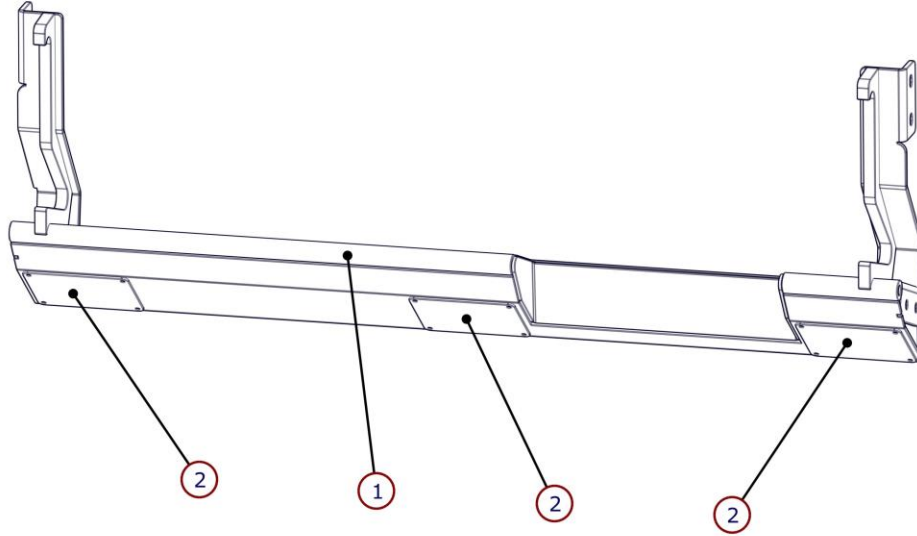


ITEM NO.	PTM #	DESCRIPTION	QTY.
1	5270486	BOLT ON LOAD EDGE SINGLE TIPPER WLDT	1
2	5270489	SINGLE CART TIPPER EDGE ACCESS PANEL	2

LOAD EDGES

13

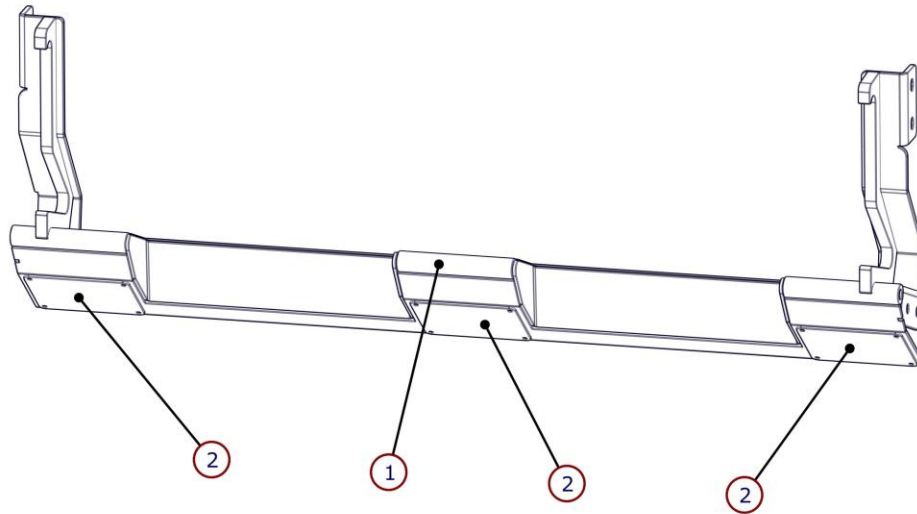
PASSENGER OFFSET LOAD EDGE



ITEM NO.	PTM #	DESCRIPTION	QTY.
1	5270604	BOLT ON LOAD EDGE, OFFSET PASSENGER SIDE WLDT	1
2	5270483	DOUBLE CART TIPPER EDGE ACCESS PANEL	3

DOUBLE TIPPER LOAD EDGE

PTM # 5270513

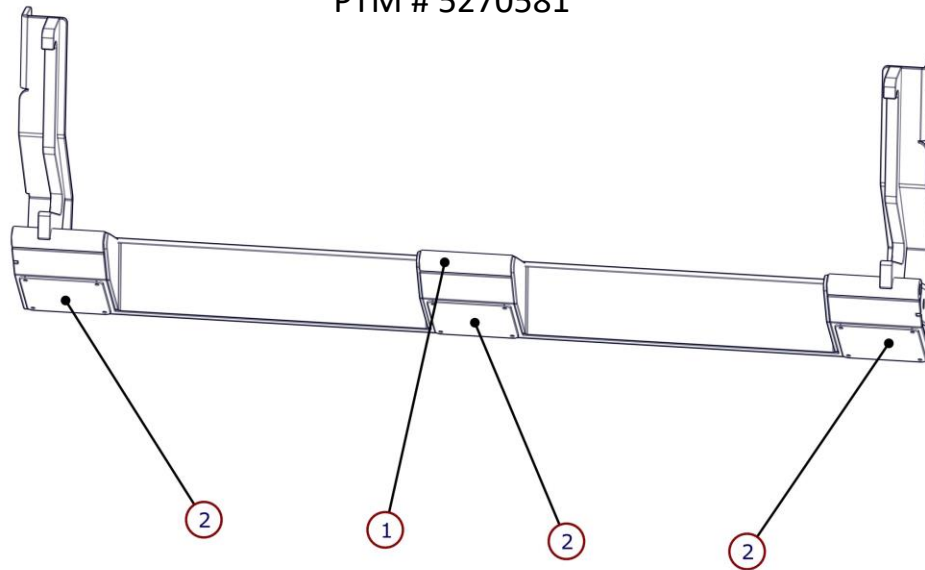


ITEM NO.	PTM #	DESCRIPTION	QTY.
1	5270485	BOLT ON LOAD EDGE DBL TIPPER WLDT	1
2	5270483	DOUBLE CART TIPPER EDGE ACCESS PANEL	3

14 LOAD EDGES

DOUBLE EUROPEAN TIPPER LOAD EDGE

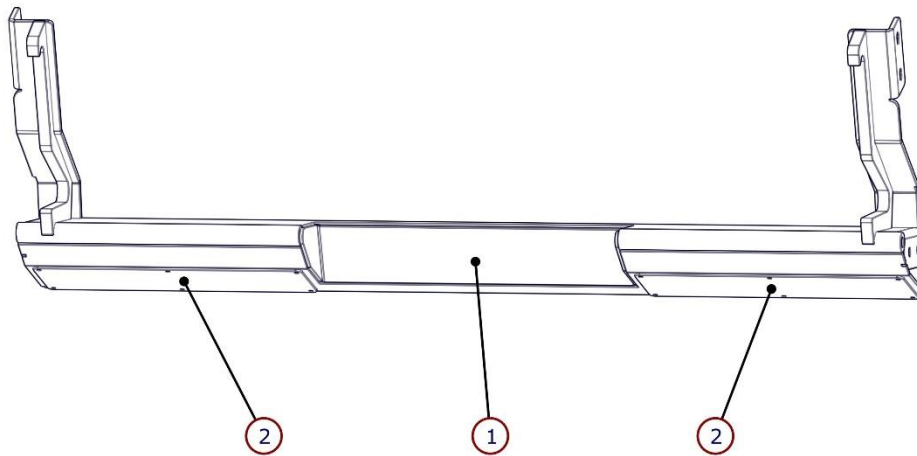
PTM # 5270581



ITEM NO.	PTM #	DESCRIPTION	QTY.
1	5270580	BOLT ON LOAD EDGE, BDL EUROPEAN TIPPER WLDT	1
2	5270586	RL, TG BLE, DUAL EUROPEAN TIPPER SIDE COVER	3

SINGLE D6220WC LOAD EDGE

PTM # 5270757



ITEM NO.	PTM #	DESCRIPTION	QTY.
1	5270757	LOAD EDGE, SINGLE TIPPER, D6220WC	1
2	5270762	LOAD EDGE ACCESS PANEL, D6220WC	2

LOAD EDGES 15

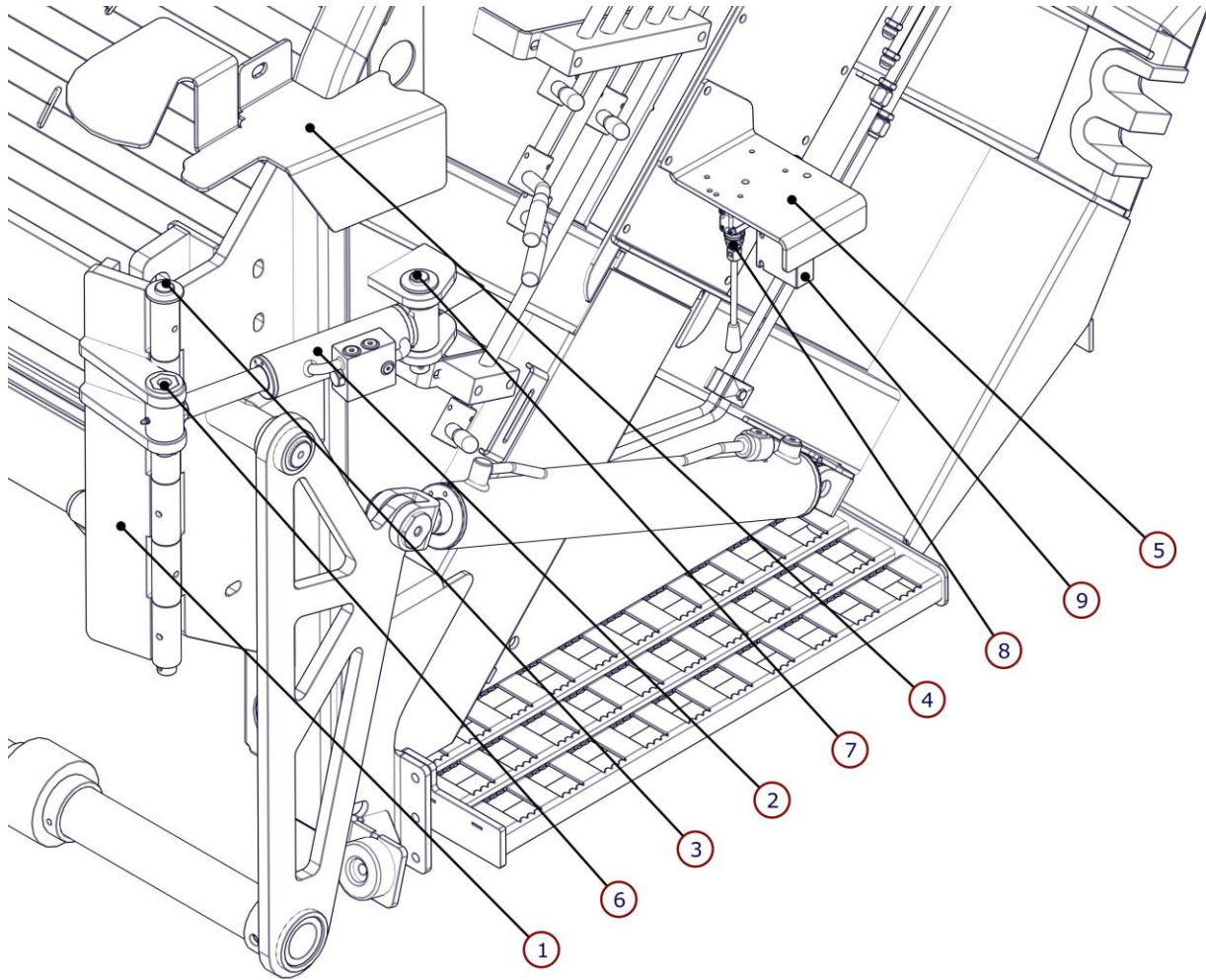
CART TIPPERS



16 LOAD EDGES

ITEM NO.	PTM #	DESCRIPTION	QTY.
1	9250550	PERKINS D6220 CART TIPPER	N/A
2	9250551	PERKINS D6250 EUROPEAN CART TIPPER	N/A
3	9250552	PERKINS D6080CB ROTARY CART TIPPER	N/A
4	9250553	BAYNE BTL 1110 CART TIPPER	N/A
5	9250554	PERKINS D6220WC CART TIPPER	N/A
6	9250558	ROTAC SCOOP CART TIPPER	N/A
7	9250559	ROTAC RECOIL CART TIPPER	N/A
8	9450018	FLOW CONTROL VALVE	A/R

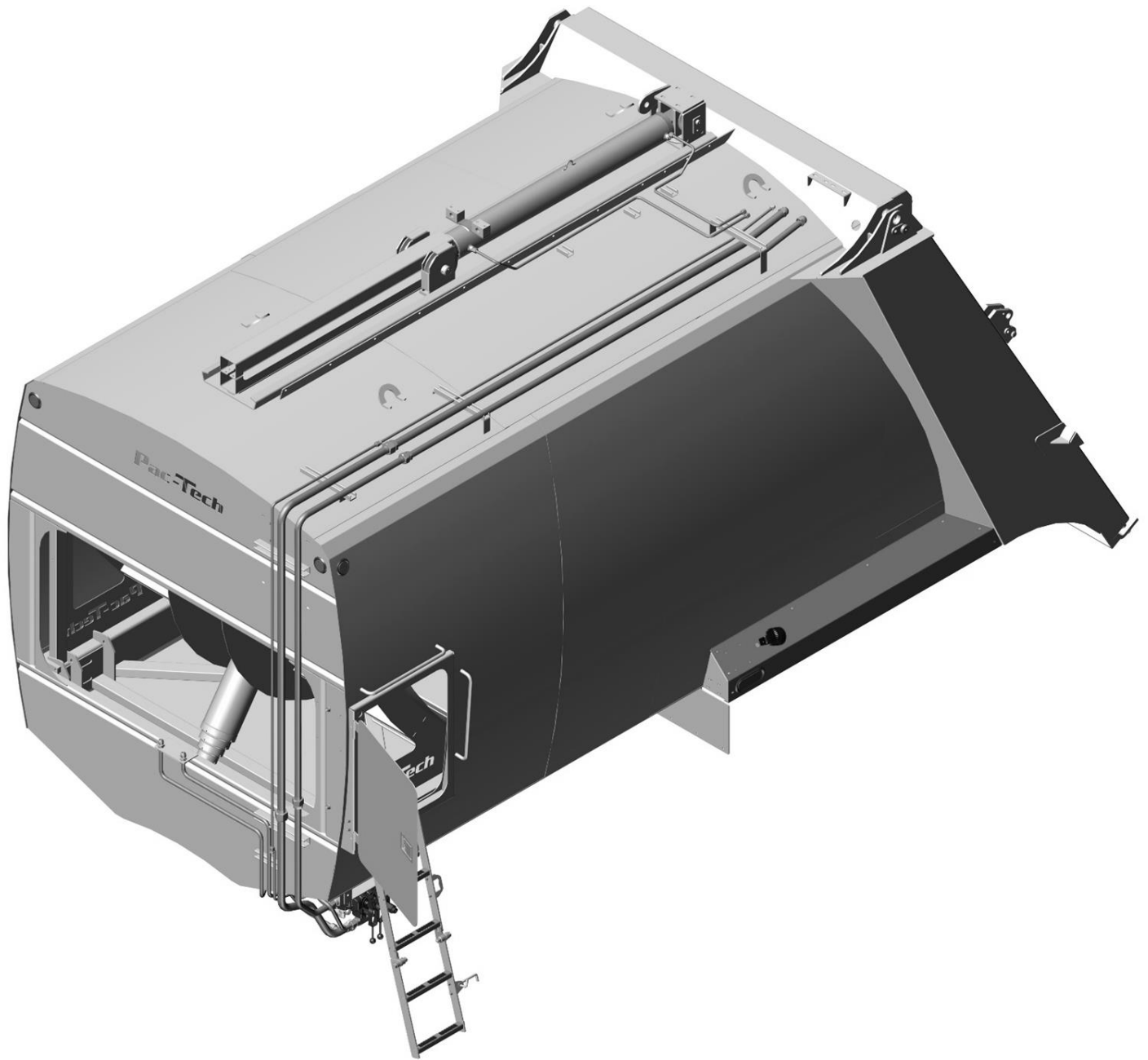
HYDRAULIC GUIDE LATCH



ITEM NO.	PTM #	DESCRIPTION	QTY.
1	5270176	GUIDE CLAMP HINGE PLATE WELDMENT RH	1
-	5270177	GUIDE CLAMP HINGE PLATE WELDMENT LH	1
2	9250502	CYLINDER - RL, HYDRAULIC CAN LATCH	2
3	5270572	GUIDE CLAMP HINGE PIN WELDMENT	1
4	5270732	RL, HYD GUIDE, PIVOT COVER LH, GEN 2	1
-	5270733	RL, HYD GUIDE, PIVOT COVER RH, GEN 2	1
5	5270084	RL, VALVE MOUNT, HYD GUIDE LATCH	1
6	5270570	CYL ROD PIN WELDMENT	2
7	5270571	CYL BASE PIN WELDMENT	2
8	9450503	GEN 2 HYDRAULIC HAND VALVE	1
-	9250556	GEN 1 HYDRAULIC HAND VALVE (PERKINS)	A/R
9	9450505	VALVE - RL, 50/50, CART LOCKER	1
10	9450504	BLOCK - RL, DIVERTER (NOT PICTURED MOUNT ON VA35 VALVE)	1

LOAD EDGES 17

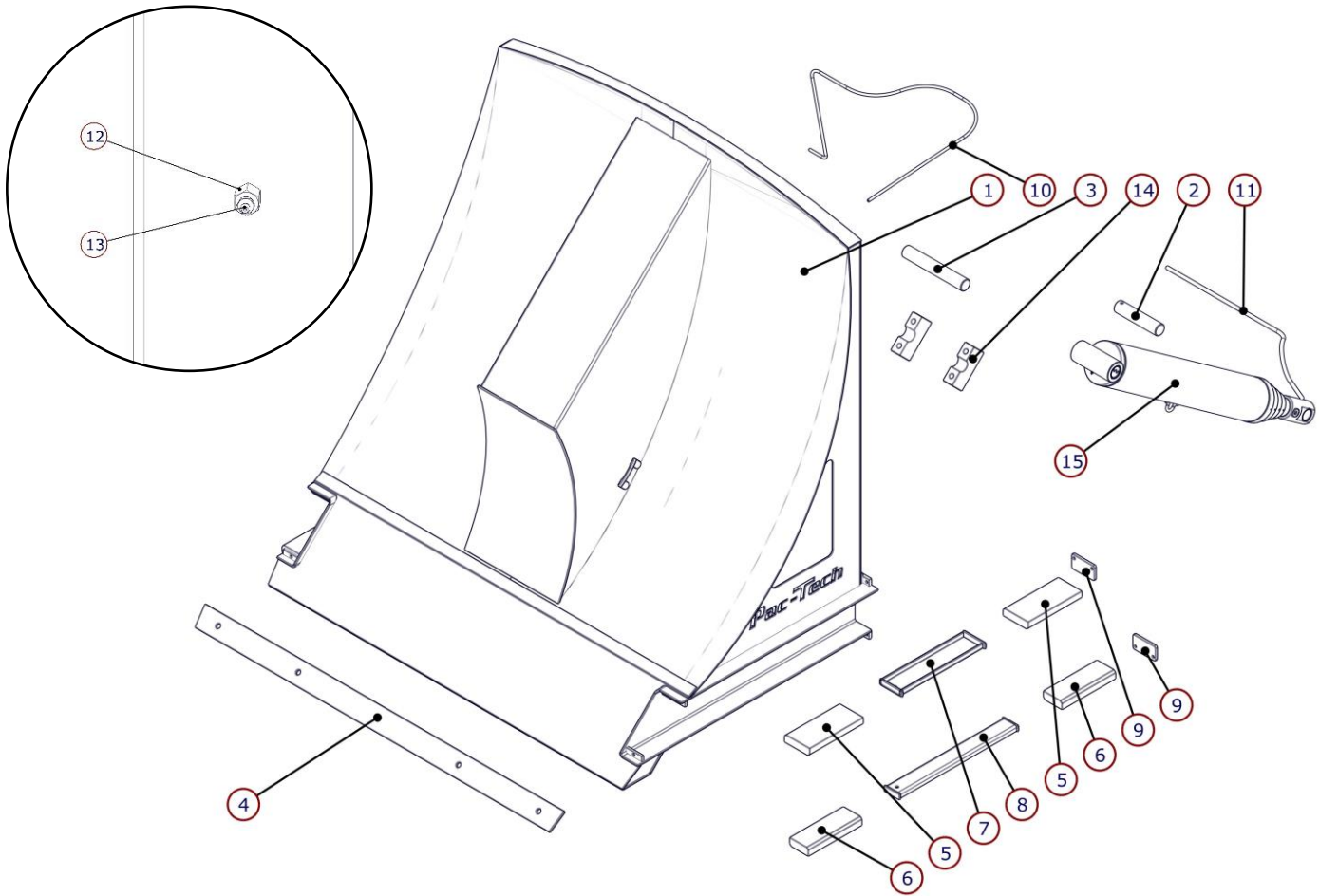
BODY



BODY

18

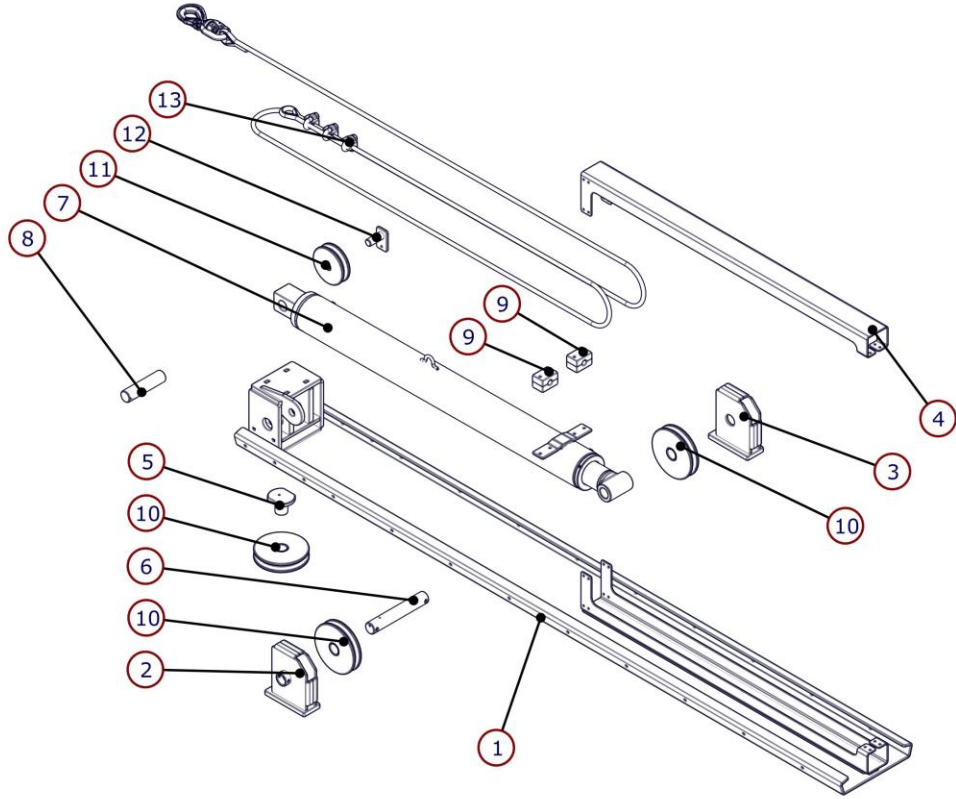
EJECTOR ASSEMBLY



ITEM NO.	PTM #	MTM #	DESCRIPTION	QTY.
1	5470301	1416215	RL EJECTOR ASSEMBLY, GEN 2	1
2	5470203	603938	RL EJECTOR PIN, ROD	1
3	5470204	603939	EL EJECTOR PIN, BASE	1
4	5470339	1416169	RL EJECTOR FRONT EDGE	1
5	5470263	604908	RL EJECTOR TOP SHOE	2
6	5470264	604909	RL EJECTOR BOTTOM SHOE	2
7	5470265	-	RL EJECTOR TOP SHOE SPACER WELDMENT	1
8	5470268	-	RL EJECTOR BOTTOM SHOE SPACER WELDMENT	1
9	5470342	1416549	RL EJECTOR SHOE RETAINING CLIP	2
10	9450675	-	EJECTOR REMOTE GREASE LINE	1
11	9450698	-	GREASE LINE - REMOTE, EJECTOR CYL	1
12	100125	-	GREASE ZERK BULKHEAD	1
13	710003	-	GREASE ZERK	1
14	5470207	-	RL EJECTOR PILLOW BLOCK BOTTOM	2
15A	9250521	1148074	20YD EJECTOR CYLINDER	1
15B	9250520	1496239	25YD EJECTOR CYLINDER	1
15C	9250527	1401720	28 YD EJECTOR CYLINDER	1
15D	9250525	1604959	32YD EJECTOR CYLINDER	1

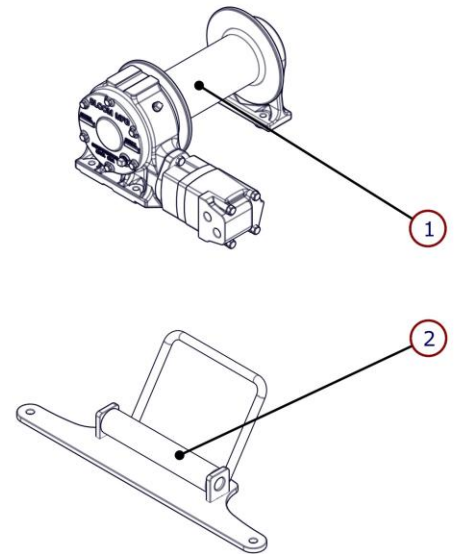
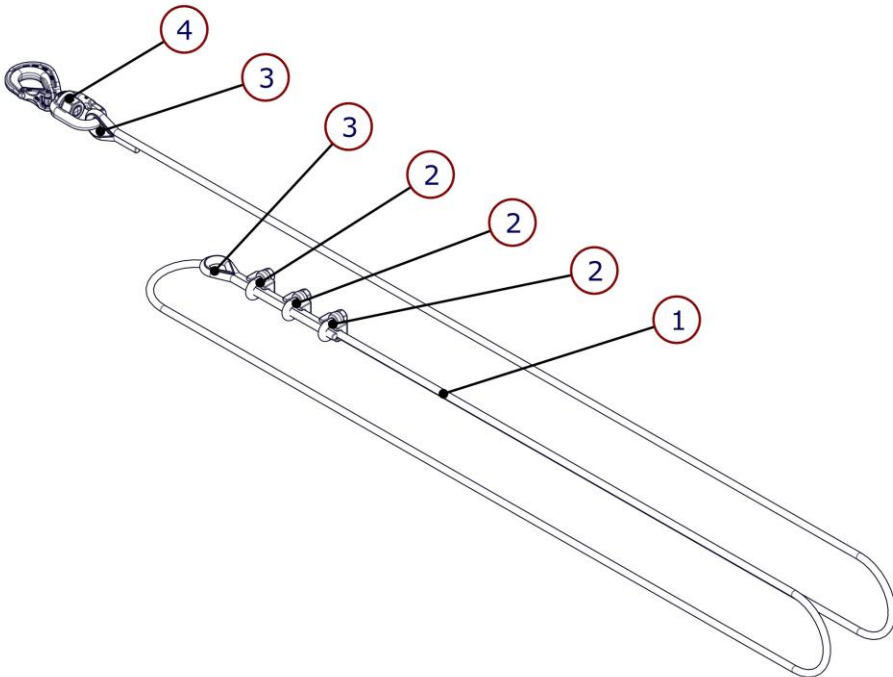
BODY 19

REEVING CYLINDER ASSEMBLY



REEVING CABLE ASSEMBLY

WINCH



20 BODY

REEVING CYLINDER ASSEMBLY

ITEM NO.	PTM #	MTM #	DESCRIPTION	QTY.
1	5870261	604060	REEVING CYL WLDT	1
2	5870089	602152	SLIDING SHEAVE MOUNT WLDT RH	1
3	5870599	602152	SLIDING SHEAVE MOUNT WLDT LH	1
4	5870079	1130534	REEVING CYL SHAFT PROTECTION	1
5	5870094	604066	BOTTOM LARGE SHEAVE PIN	1
6	5870095	602148	SLIDING SHEAVE CYL PIN	1
7	9250515	1109369	REEVING CYL	1
8	5870103	604069	REEVING CYL PIN	1
9	5870106	603273	PLASTIC GUIDE BLOCK	4
10	5870108	604055	8 IN SHEAVE ASSY	3
11	5870107	604045	6 IN SHEAVE ASSY	1
12	5870130	604058	1 IN SHEAVE PIN WLDT	1
13	5870262	604090	REEVING CABLE ASSEMBLY	1

REEVING CABLE ASSEMBLY

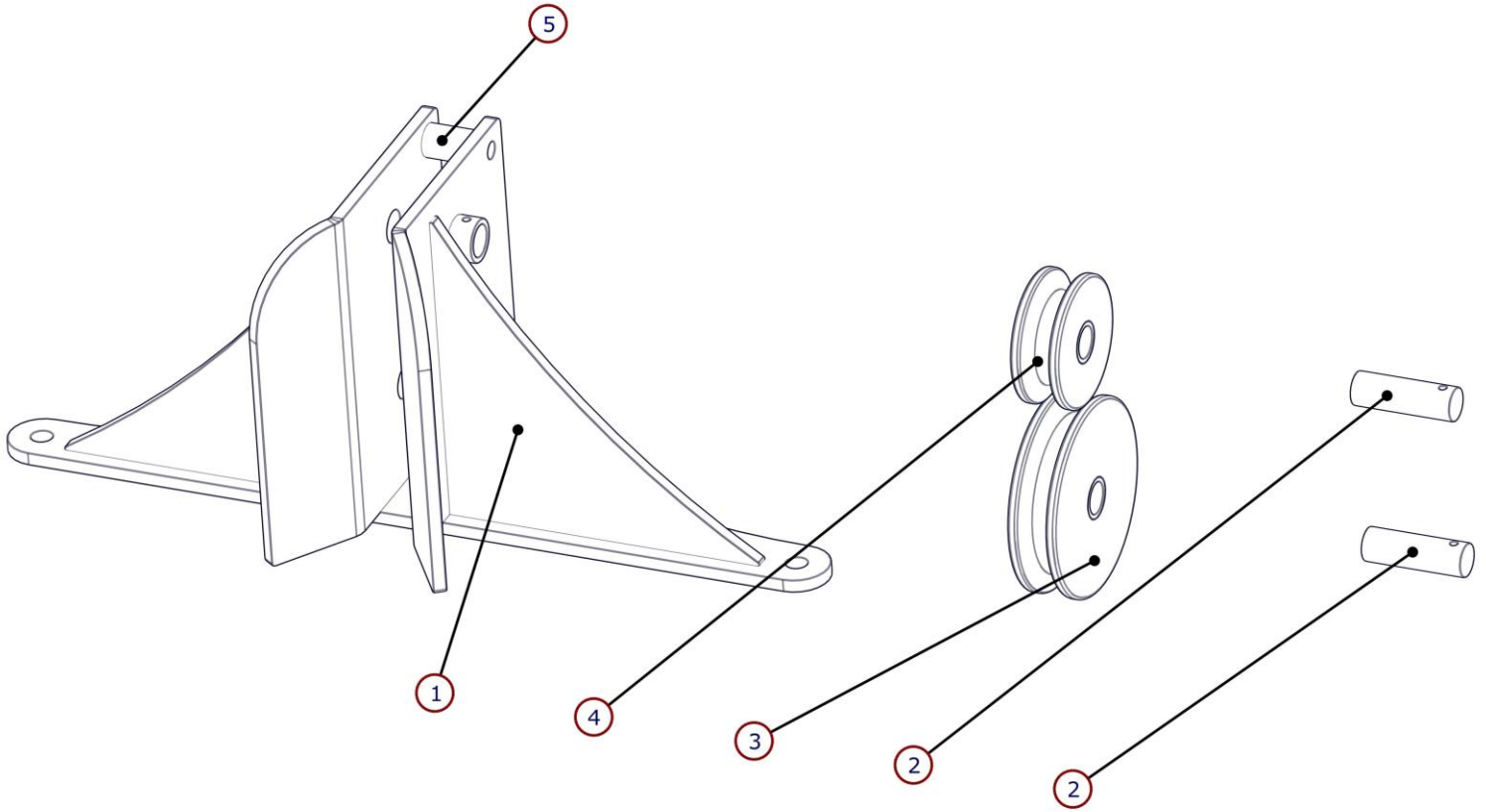
ITEM NO.	PTM #	MTM #	DESCRIPTION	QTY.
1	5270198	604090	REEVING CABLE	1
2	9350502	602208	1/2 CABLE CLIP	3
3	9350503	1139661	1/2 CABLE THIMBLE	2
4	5270199	604091	SWIVEL HOOK	1

WINCH

ITEM NO.	PTM #	MTM #	DESCRIPTION	QTY.
1	9350505	-	WINCH, 12,000 LB	1
2	5270594	-	RL, WINCH CABLE GUIDE WLDT	1

BODY
21

CABLE GUIDE ASSEMBLY

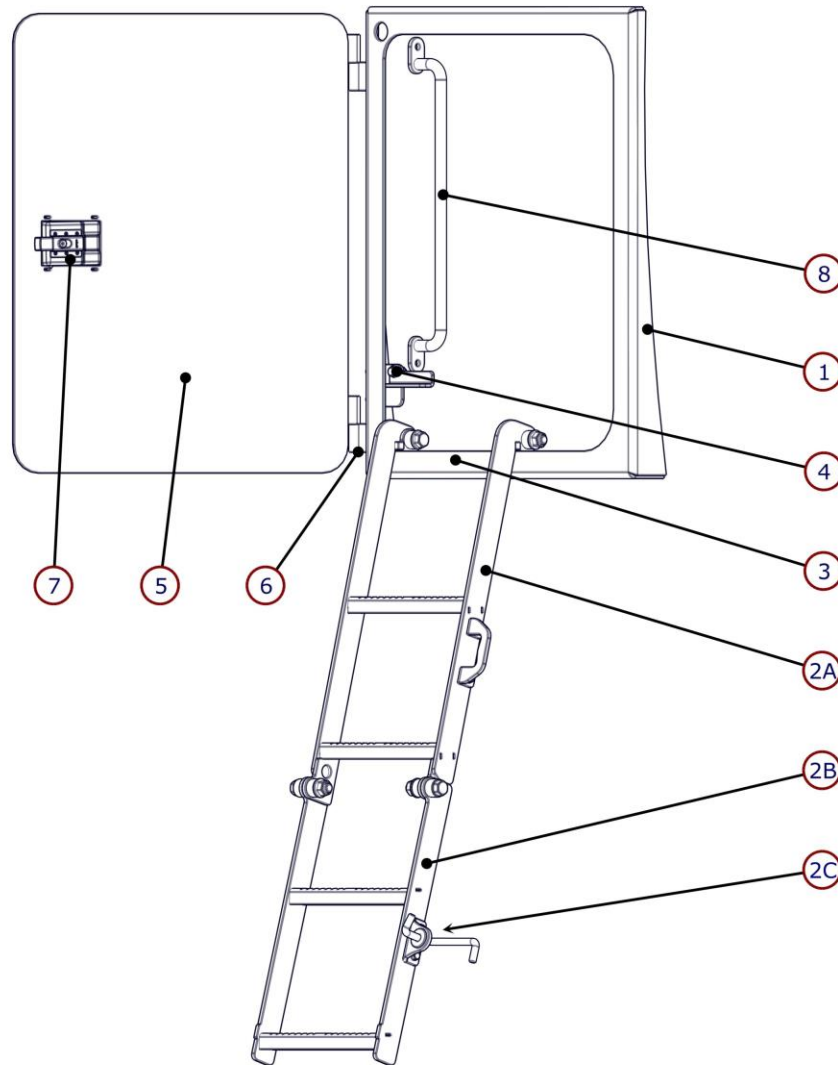


BODY

22

ITEM NO.	PTM #	MTM #	DESCRIPTION	QTY.
1	5270351	604035	CABLE GUIDE WLDT	1
2	5270358	602155	CABLE GUIDE SHEAVE PIN	2
3	5870107	604045	6 IN SHEAVE ASSY	1
4	5870109	604050	4 IN SHEAVE ASSY	1
5	5270165	-	RL, CABLE GUIDE SPACER	1

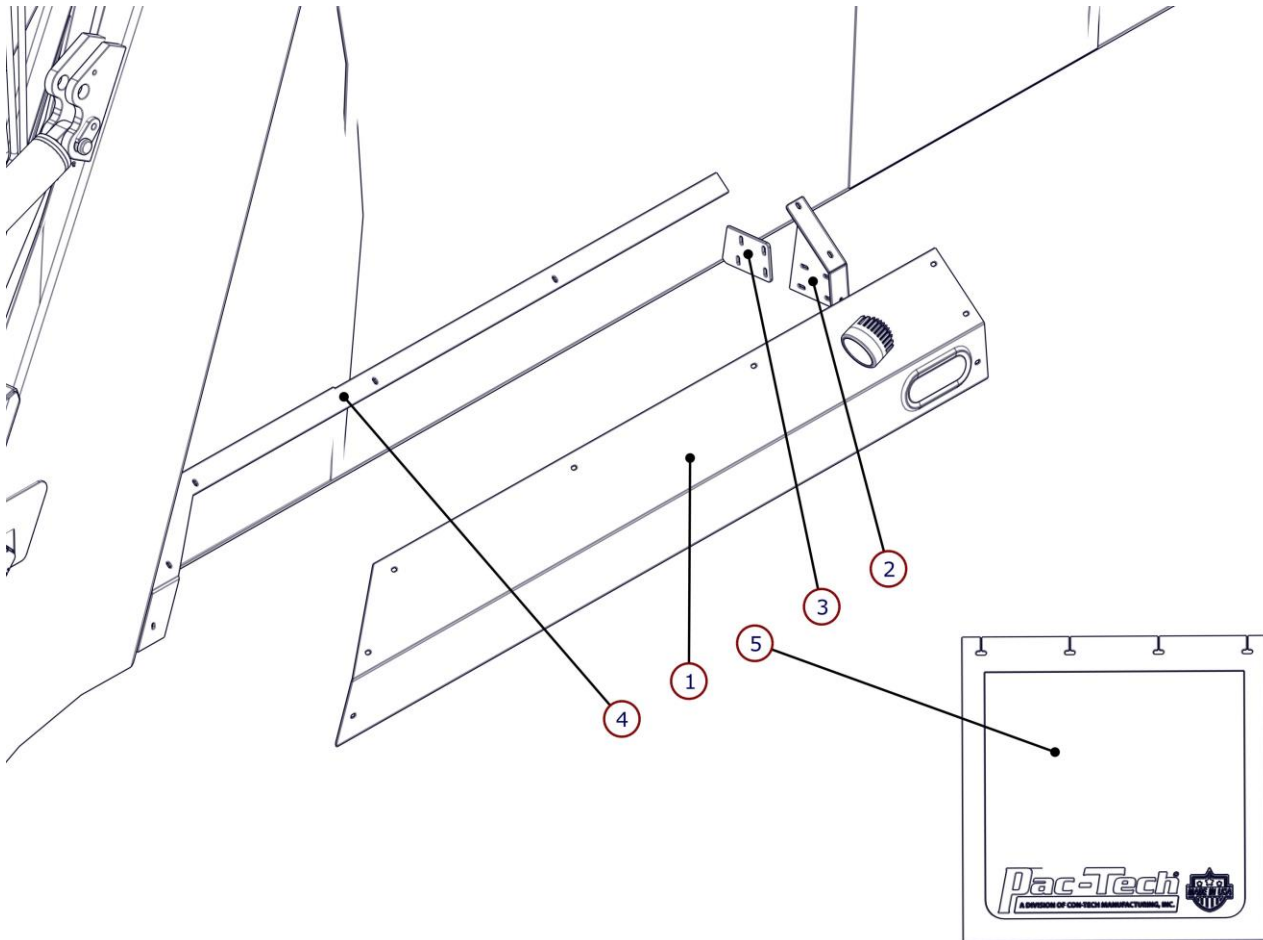
LADDER (OPTIONAL)



ITEM NO.	PTM #	DESCRIPTION	QTY.
1	5870511	RL, DOOR FRAME, LADDER OPTION	1
2	5870501	RL, LADDER ASSY	1
2A	5870503	RL, LADDER, UPPER WLDT	1
2B	5870502	RL, LADDER, LOWER WLDT	1
2C	216277	LADDER LATCH, BOLT ON	1
3	5870579	RL, LADDER, MOUNT BRKT, WLDT	1
4	5870584	RL, LADDER, LOWER RETAINER ASSY	1
5	5070986	RL, CLEANOUT DOOR PLT PADDLE LATCH	1
6	5071110	CLEANOUT DOOR BOLT THROUGH HINGE	4
7	9650015	PADDLE LATCH	1
8	5870613	RL, LADDER, INSIDE BODY HANDLE, BOLT IN, WLDT	A/R

**BODY
23**

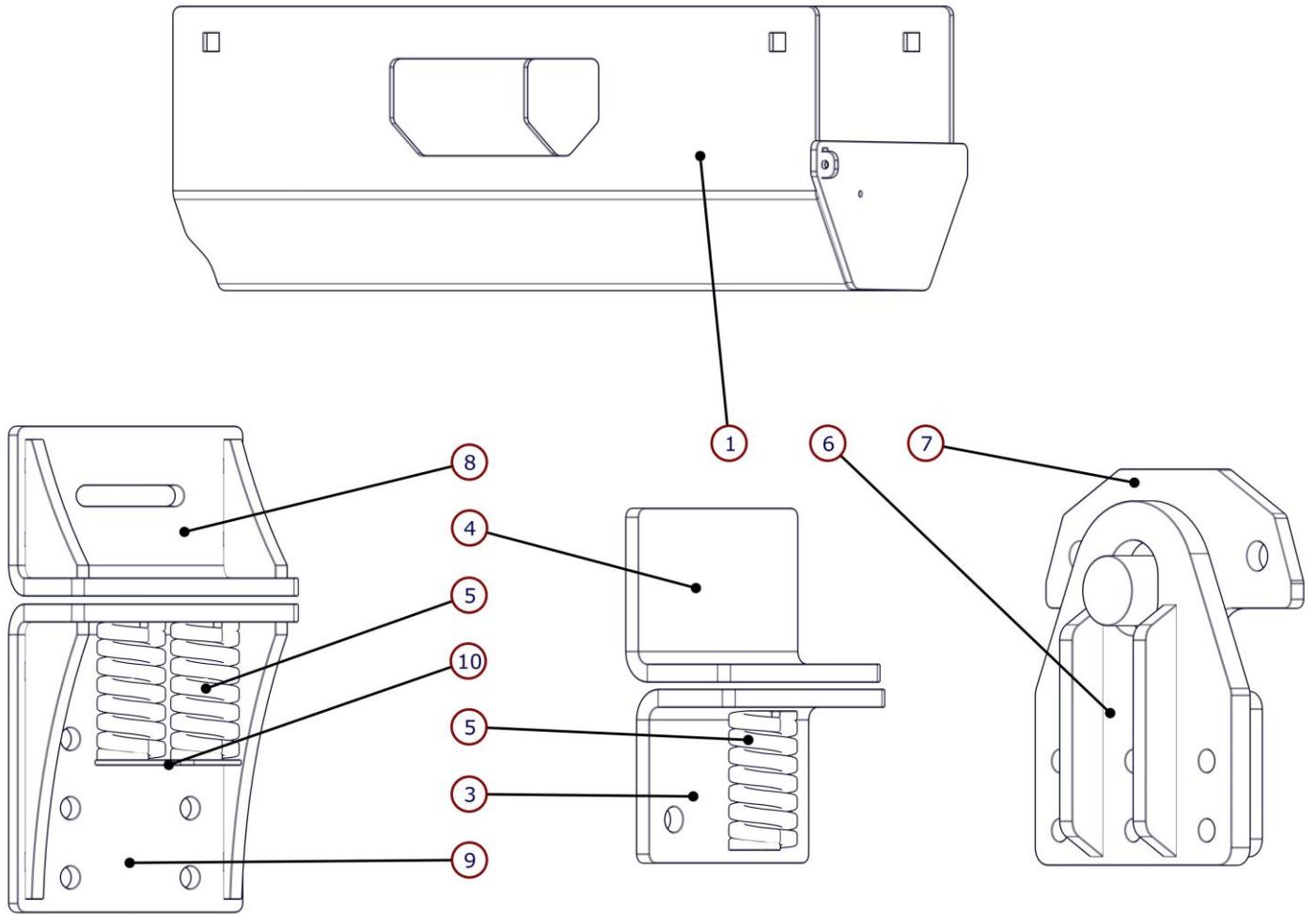
FENDERS & MUD FLAPS



24 BODY

ITEM NO.	PTM #	DESCRIPTION	QTY.
1	5071179	RL, STAINLESS FENDER RH GEN 2	1
-	5071180	RL, STAINLESS FENDER, LH GEN 2	1
2	5070984	RL FENDER FRONT SUPOORT RH	1
-	5070983	RL FENDER FRONT SUPPORT LH	1
3	5070977	RL, BOTTOM FENDER SUPPORT	2
4	5071182	RL, FENDER STRAP RH GEN 2	1
-	5071183	RL, FENDER STRAP LH GEN 2	1
5	9300044	MUD FLAP - BLACK 24 x 24, PAC-TECH LOGO	A/R
-	9300045	MUD FLAP - BLACK 24 x 30, PAC-TECH LOGO	A/R
6	5870454	ANTI SAIL, PLT	A/R

MISCELLANEOUS



ITEM NO.	PTM #	DESCRIPTION	QTY.
1	5070964	RL, FIRE EXTINGUISHER ASSY	1
2	9350403	FIRE EXTINGUISHER	1
3	5870223	RL FRONT CHASSIS CLIP	2
4	5870222	RL FRONT BODY CLIP	2
5	9450205	SPRING - BODY HOLD DOWN, RL	6
6	5870224	RL REAR CLIP WLDT	2
7	5870234	RL REAR BODY MOUNT WLDT	2
8	5870678	RL, FRONT DBL SPRING BODY CLIP WLDT	2
9	5870675	RL, FRONT DBL SPRING CHASSIS CLIP WLDT	2
10	5870679	DUAL SPRING WASHER	2
11	5680049	SHOVEL	A/R
12	5870671	SHOVEL HOLDER	A/R

BODY 25

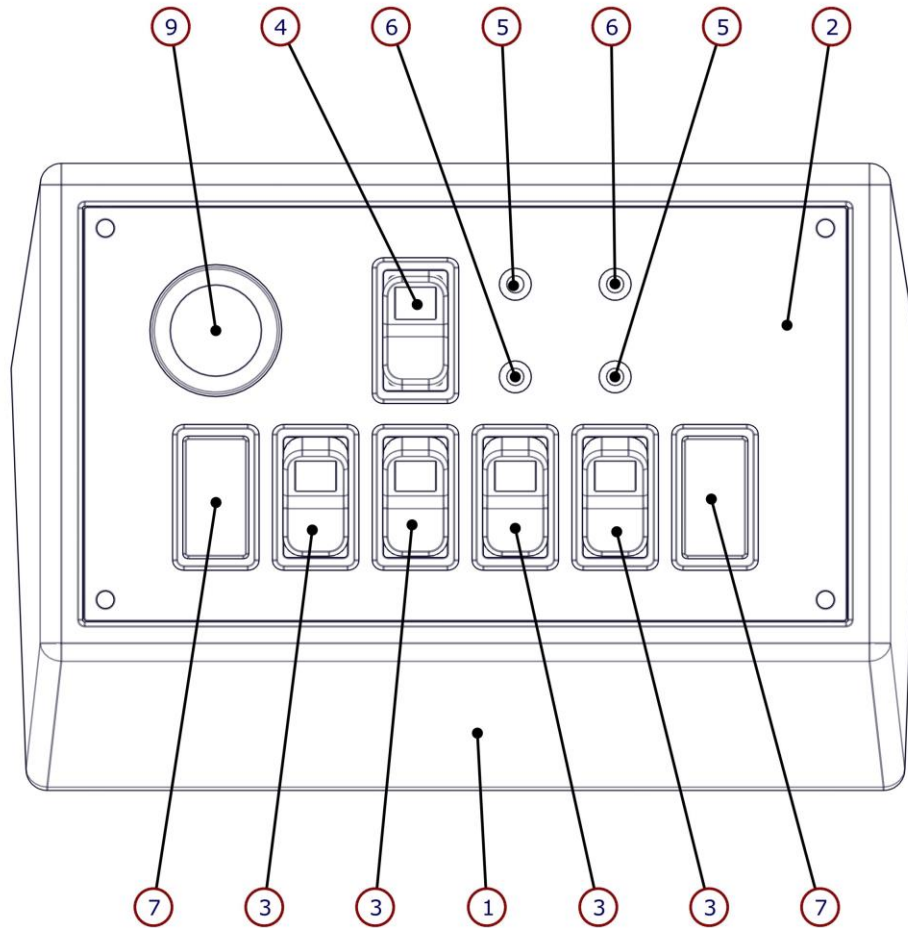
ELECTRONICS



ELECTRONICS

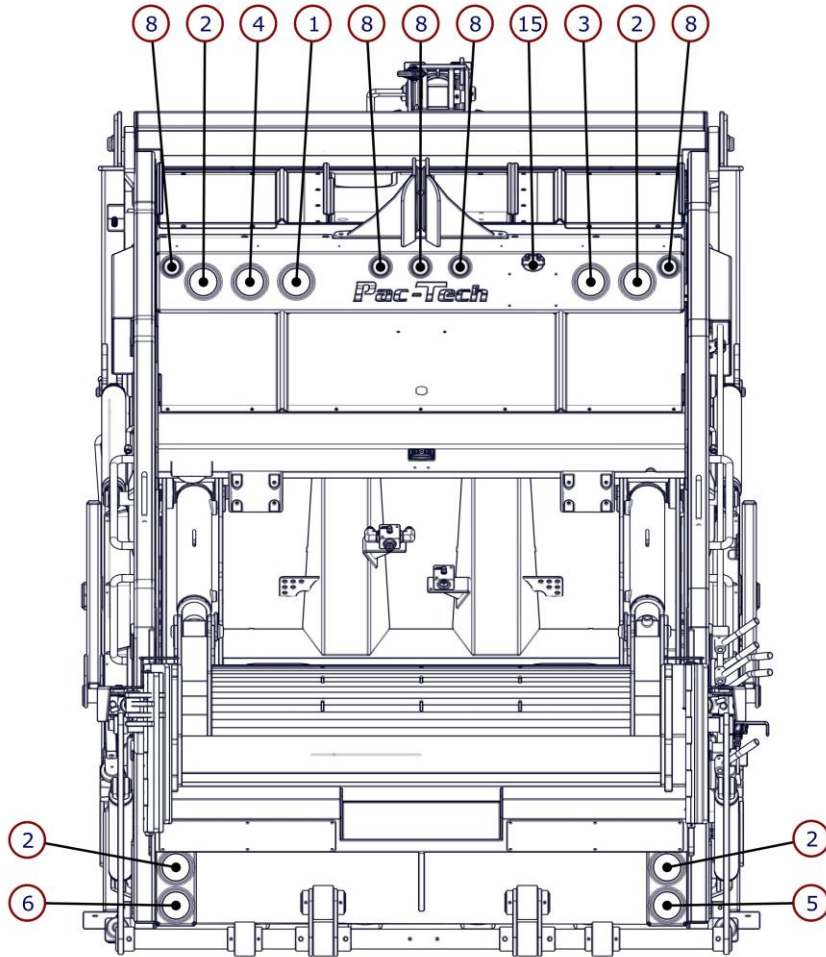
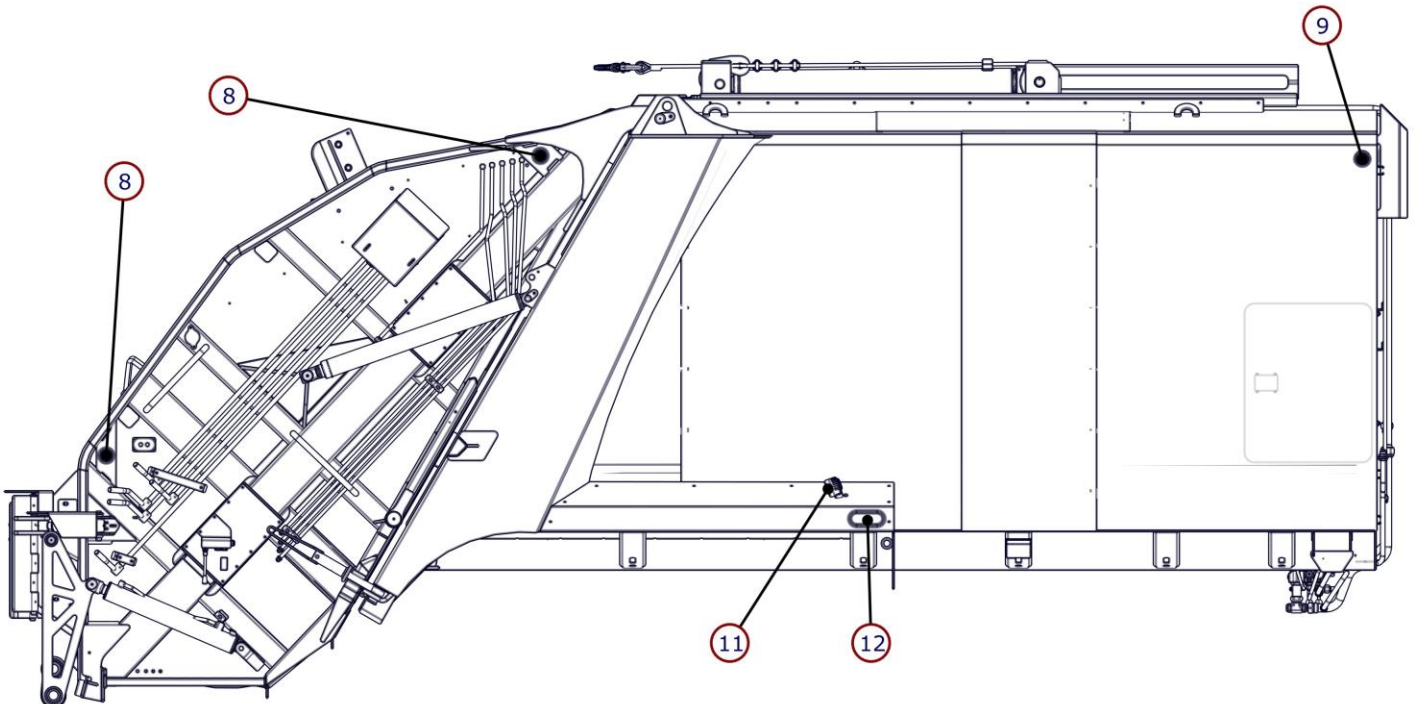
26

CAB CONTROLS



1	285736	RAM MOUNT CONTROL BOX	1
2	5870050	RL, IN CAB PLACCARD	1
-	799860	CAB BOX DECAL	1
3	9050030	SWITCH - MAINTAINED, LIGHTED RED	4
4	715607	SWITCH - ROCKER, MOMENTARY, LIGHTED RED	A/R
5	715135	GREEN LED	2
6	715136	RED LED	2
7	715610	SWITCH BLANK	2
8	715359	ALARM BUZZER - IN CAB	A/R
9	9050034	E-STOP BUTTON	1
10	9150414	HARNESS - CAB BOX, ONE CONNECTOR (NOT SHOWN)	1

LIGHTS



28 ELECTRONICS

28

LIGHTS

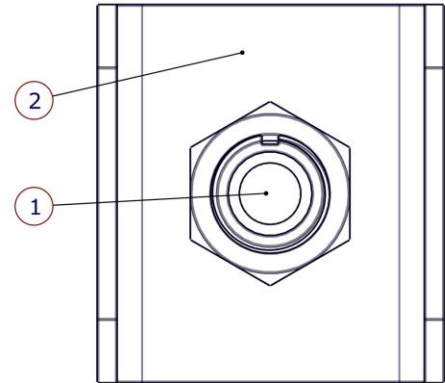
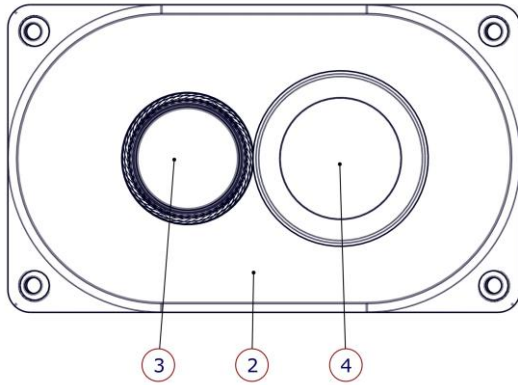
STANDARD 12V SYSTEM

ITEM NO.	PTM #	DESCRIPTION	QTY.
1	715857	LIGHT - BACK UP LED, 4"	1
2	715855	LIGHT - STT LED, 4"	4
3	9150450	LIGHT - 4" LED STROBE, CURBSIDE HIGH	1
4	9150451	LIGHT - 4" LED STROBE, ROADSIDE HIGH	1
5	9150452	LIGHT - 4" LED STROBE, CURBSIDE LOW	1
6	9150453	LIGHT - 4" LED STROBE, ROADSIDE LOW	1
7	715004	4" GROMMET	9
8	715854	LIGHT - RED LED, 2.5"	9
9	715856	LIGHT - AMBER LED, 2.5" STROBE	4
10	715001	2.5" GROMMET	13
11	715699	LIGHT - WORK, ABL, ROUND	3
12	9150465	LIGHT - 6.5" OVAL AMBER LED, MIDSHIP	2
13	9050033	E-STOP / THROTTLE ADVANCE	1
14	9050200	REVERSE ALARM	1
15	715019	LAMP - LICENSE PLATE	1

OPTIONAL 24V SYSTEM

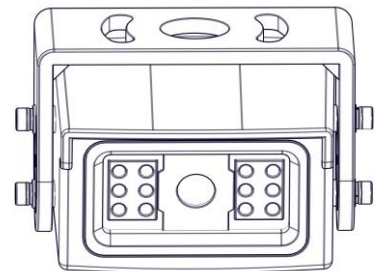
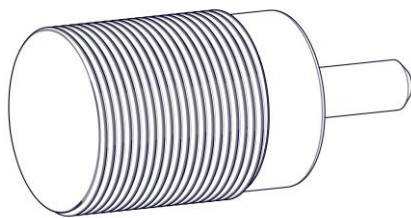
ITEM NO.	PTM #	DESCRIPTION	QTY.
1	9150456	4" REVERSE LIGHTS	1
2	9150457	4" STT LIGHT	4
3	9150458	2.5" AMBER MARKER LIGHT	4
4	9150459	2.5" RED MARKER LIGHT	9
5	9150460	AMBER OVAL TURN SIGNAL	2

ELECTRICAL COMPONENTS



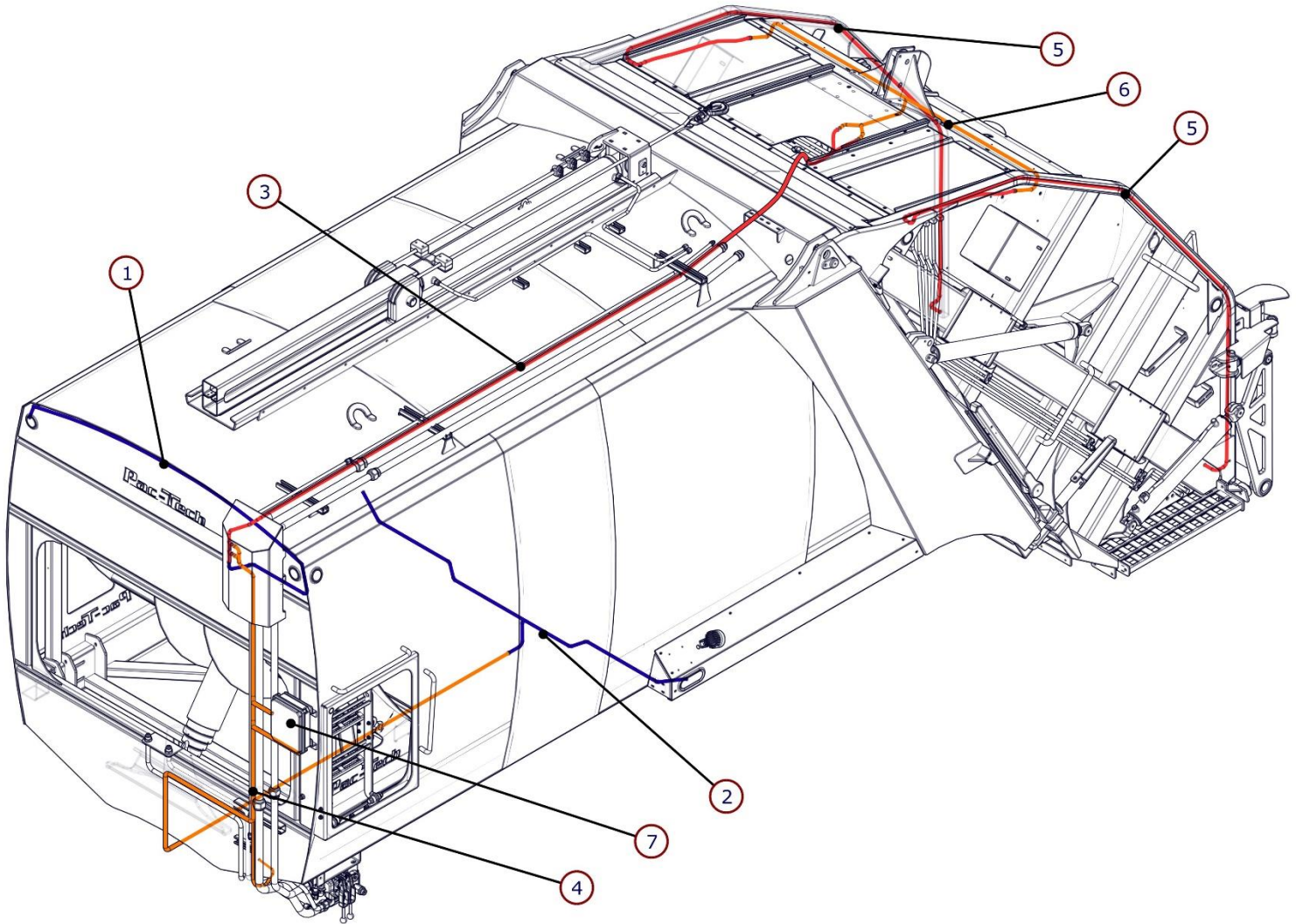
ITEM NO.	PTM #	DESCRIPTION	QTY.
1	9050033	REAR CONTROL STATION, CURB SIDE	1
-	9050048	REAR CONTROL STATION, STREET SIDE	
2	9050032	ENCLOSURE, RL, GRAY DUAL BUTTON, TA	1
-	9990058	DECAL - RL, THROTTLE/E-STOP	1
3	9050026	SWITCH - PUSH BUTTON, GREEN	1
-	9050028	CONTACT ELEMENT, N.O., REL	
4	9050043	E-STOP BUTTON	1

ITEM NO.	PTM #	DESCRIPTION
1	715130	TOGGLE SWITCH
2	285507	TOGGLE GUARD
3	9900099	THROTTLE ADVANCE DECAL



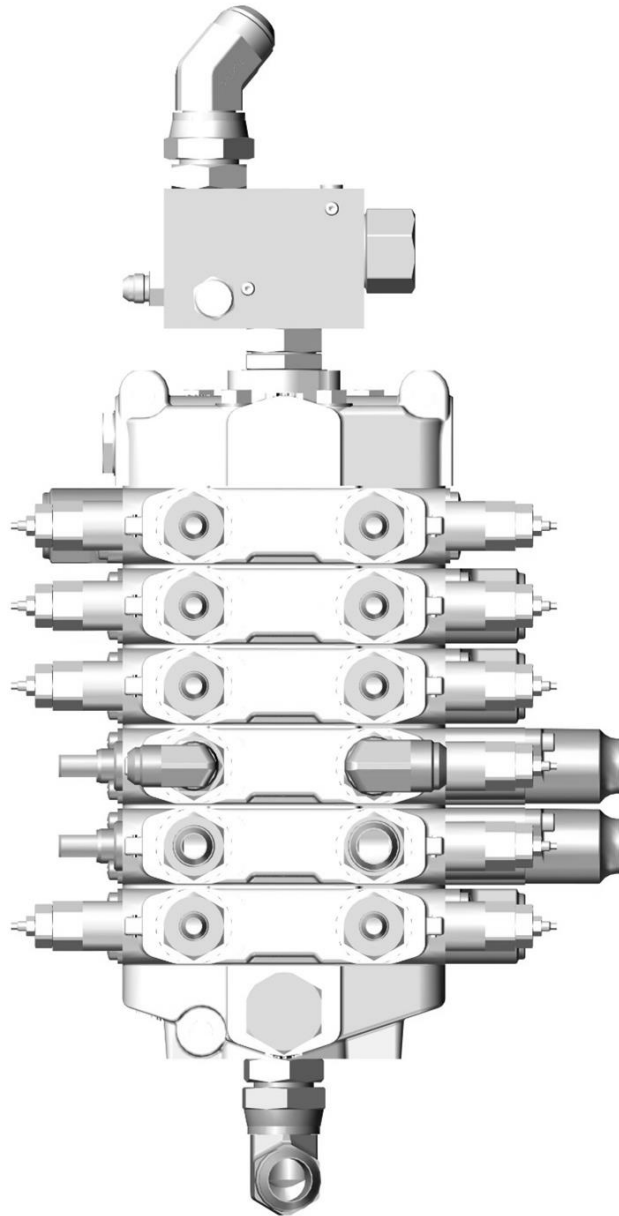
ITEM NO.	PTM #	MTM #	DESCRIPTION
1A	715461	-	CAMERA
1B	9050304	-	CAMERA MONITOR
1C	9050307	-	15 METER CABLE
2	9450419	-	TG PROXIMITY SWITCH
3	715008D	-	THROTTLE PROXIMITY SWITCH
4	715008D	-	CLEANOUT DOOR PROXIMITY SWITCH

WIRE HARNESSSES



ITEM NO.	PTM #	DESCRIPTION	QTY
1	9150401	HARNESS - FRONT MARKER LIGHTS	1
2	9150402	HARNESS - MIDSHIP LIGHTS	1
3	9150403	HARNESS - 25YD - 32YD BODY, REAR LOADER	1
-	9450418	HARNESS - 20YD BODY, REAR LOADER	1
4	9150408	HARNESS - CHASSIS, REAR LOADER, CAB-OVER	A/R
-	9150411	HARNESS - CHASSIS, REAR LOADER, CONVENTIONAL	A/R
5	9150415	HARNESS - LOWER LIGHT BAR, REAR LOADER	2
6	9150416	HARNESS - UPPER LIGHT BAR REAR LOADER	1
7	9050051	CONTROL MODULE	1
8	9150412	HARNESS - HOT SHIFT PTO, REAR LOADER (NOT SHOWN)	1

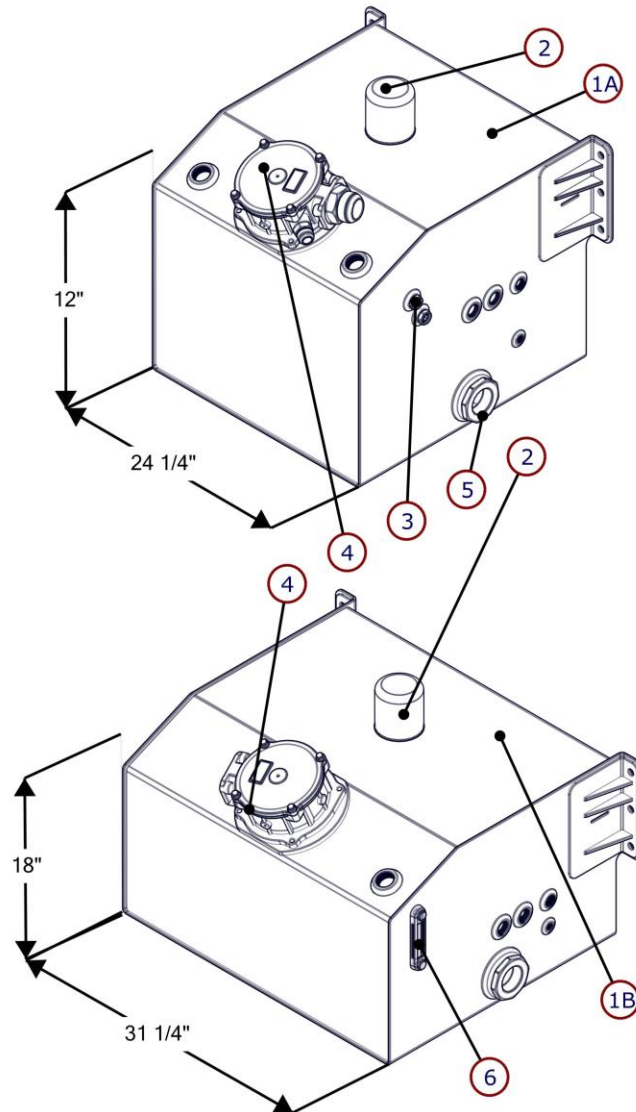
HYDRAULICS



HYDRAULICS

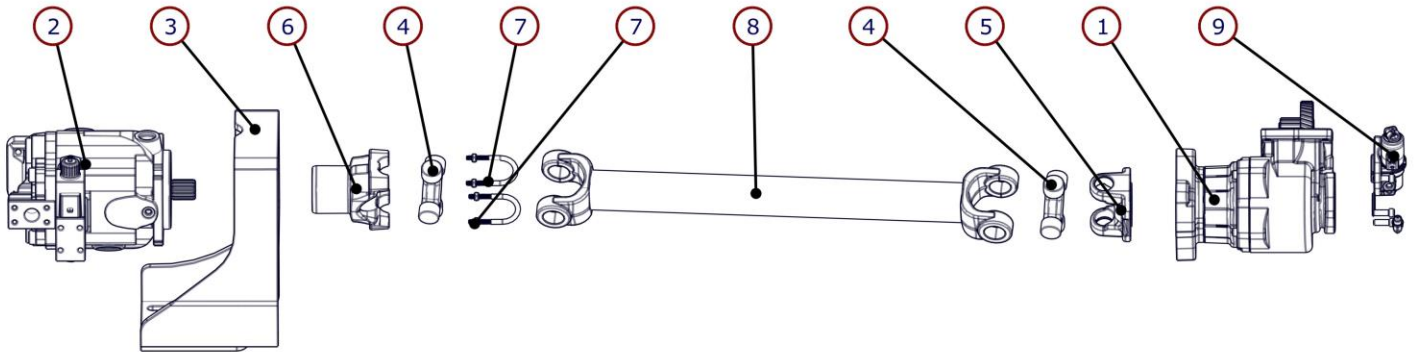
32

OIL RESERVOIR & FILTER



ITEM NO.	PTM #	MTM #	DESCRIPTION	QTY.
1A	5870175	1500812	OIL RES WLDT	1
1B	5870601	-	ASL, BANDIT, OIL RES WLDT	1
2	735013	1271796	BREATHER CAP	2
3	760017	-	SIGHT GAUGE, .75	2
4	9350154	1261253	FILTER ASSEMBLY	2
4A	9450124	1233304	FILTER ELEMENT	1
4B	9650010	-	FILTER ASSEMBLY SEAL KIT	1
5	9450400	0604419	3 NPT TANK MOUNTED SUCTION STRAINER	1
6	9450405	-	SIGHT GAUGE, TEMPERATURE	1
7	9450402	-	RETURN FILTER BYPASS INDICATOR	1

PTO & PUMP

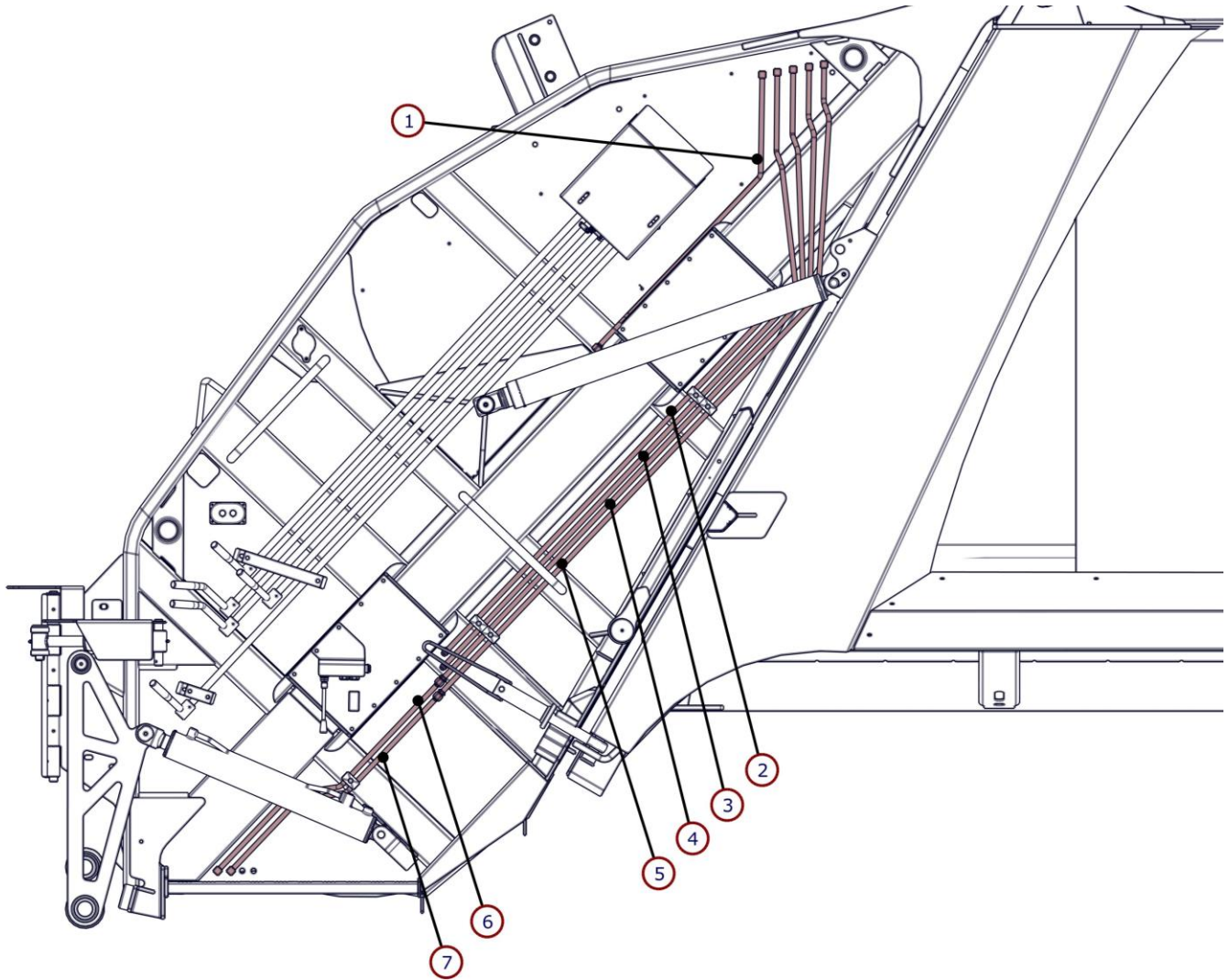


ITEM NO.	PTM #	MTM #	DESCRIPTION	QTY.
1A	9450107	N/A	CHELSEA PTO, 3000 SERIES ALLISON	1
1B	9450109	N/A	CHELSEA PTO, 4500 SERIES ALLISON	1
2	9450058	1410727	PUMP	1
3	CALL FOR ASSISTANCE	NA	PUMP MOUNT	1
4	795003	0000702	U-JOINT	2
5	795008	0000704	YOKE - FLANGE	1
6	9450699	1318574	COMPANION FLANGE – 4 BOLT	1
7	795005	0000701	U-BOLTS	2
8	SEE TABLE BELOW	NA	DRIVESHAFT	1
9			PTO SOLENOID	1

DRIVESHAFTS

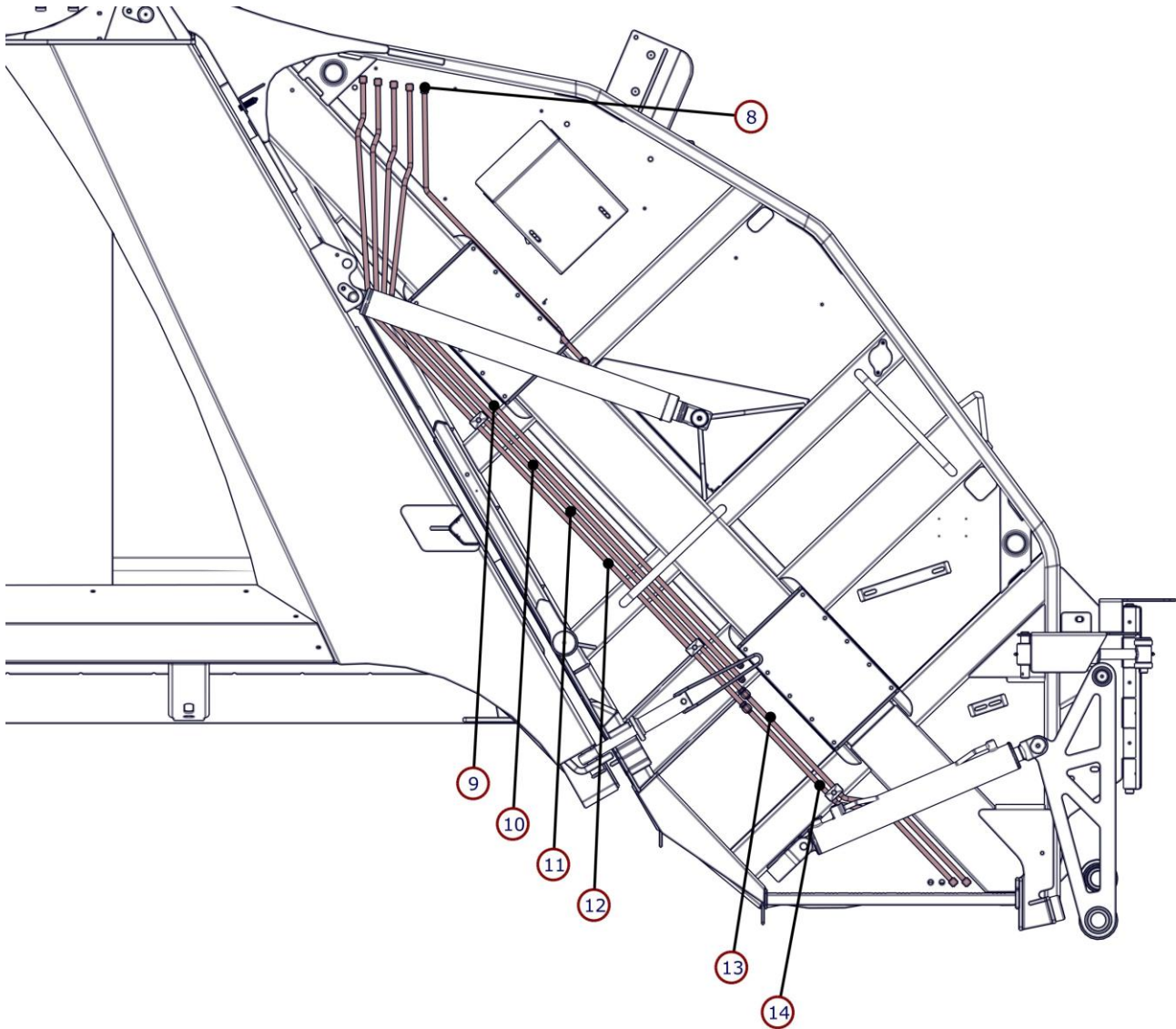
ITEM NO.	PTM#	DESCRIPTION	QTY.
1	9550028	DRIVESHAFT - 28"	1
2	9550029	DRIVESHAFT - 29"	1
3	9550030	DRIVESHAFT - 30"	1
4	9550031	DRIVESHAFT - 31"	1
5	9550034	DRIVESHAFT - 34"	1
6	9550035	DRIVESHAFT - 35"	1
7	9550036	DRIVESHAFT - 36"	1
8	9550039	DRIVESHAFT - 39"	1
9	9550042	DRIVESHAFT - 42"	1

TAILGATE HYDRAULIC TUBES



ITEM NO.	PTM #	MTM #	DESCRIPTION	QTY.
1	5870296	605837	RL, HYD TUBE, RH, 08,03 TG CYL	1
2	5870323	-	RL, HYD TUBE, KICK BAR RETRACT, CS, CTM	1
3	5870322	-	RL, HYD TUBE, KICK BAR EXTEND, CS, CTM	1
4	5870534	-	RL, HYD TUBE, CART TIPPER RETRACT, CS, CTM, SHORT	1
5	5870535	-	RL, HYD TUBE, CART TIPPER EXTEND, CS, CTM, SHORT	1
6	5870552	-	RL, HYD TUBE, CART TIPPER RETRACT, CS, CTM, EXT, ANG	1
7	5870551	-	RL, HYD TUBE, CART TIPPER EXTEND, CS, CTM, EXT, ANG	1

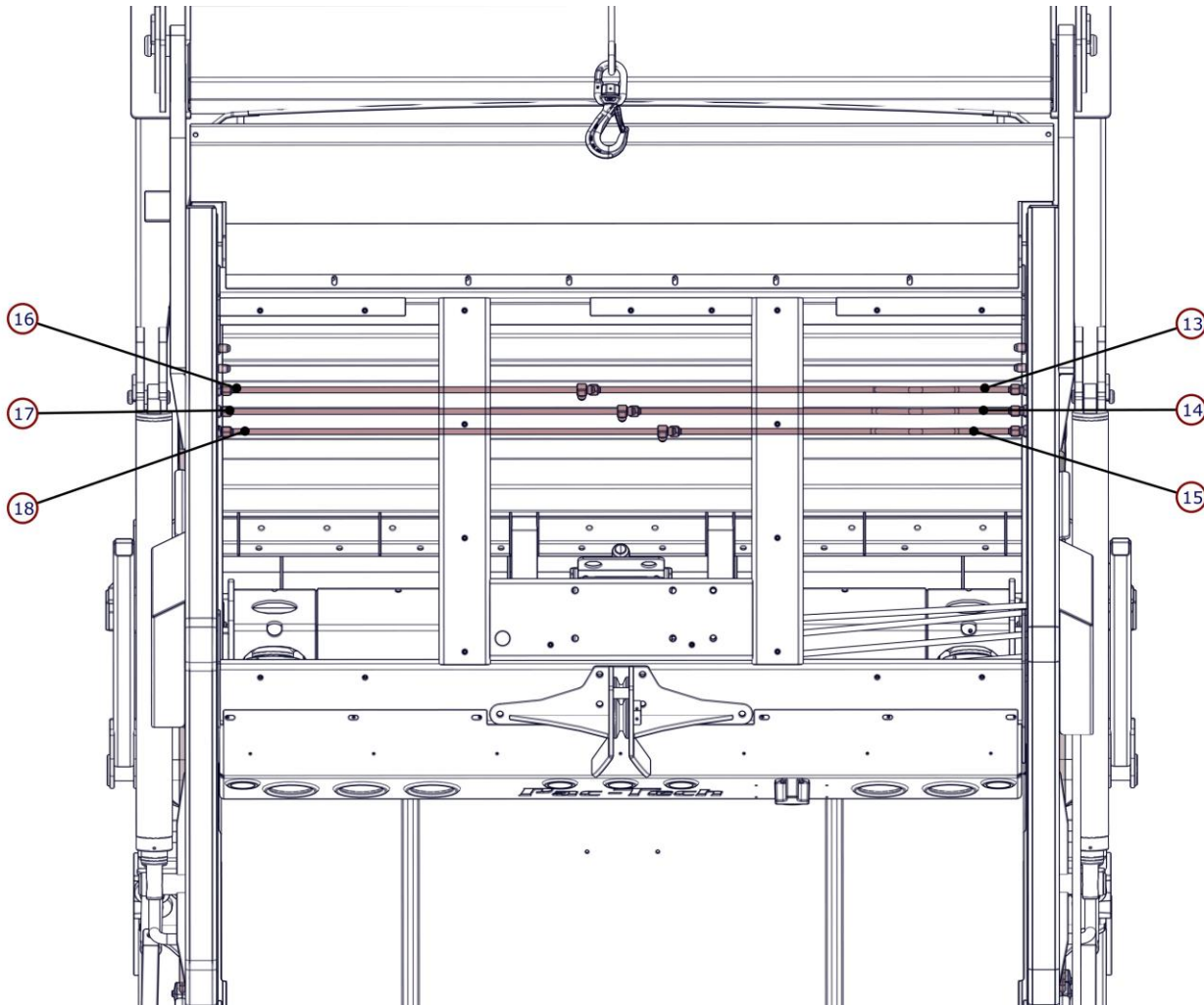
TAILGATE HYDRAULIC TUBES



36 HYDRAULICS

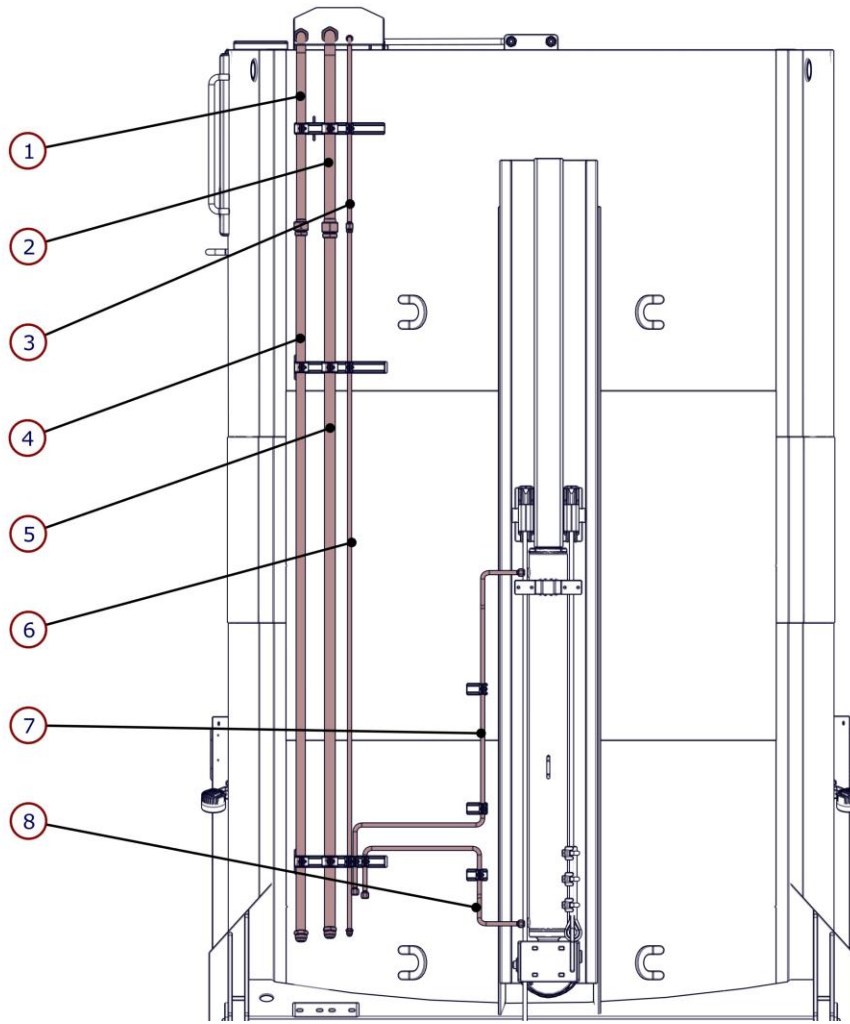
ITEM NO.	PTM #	MTM #	DESCRIPTION	QTY.
8	5870295	605836	RL, HYD TUBE, LH,08,03 TG CYL	1
9	5870327	-	RL, HYD TUBE, KICK BAR RETRACT, SS, CTM	1
10	5870326	-	RL, HYD TUBE, KICK BAR EXTEND, SS, CTM	1
11	5870556	-	RL, HYD TUBE, CART TIPPER RETRACT, SS, CTM, SHORT	1
12	5870555	-	RL, HYD TUBE, CART TIPPER EXTEND, SS, CTM, SHORT	1
13	5870560	-	RL, HYD TUBE, CART TIPPER RETRACT, SS, CTM, EXT, ANG	1
14	5870559	-	RL, HYD TUBE, CART TIPPER EXTEND, SS, CTM, EXT, ANG	1

TAILGATE HYDRAULIC TUBES



ITEM NO.	PTM #	MTM #	DESCRIPTION	QTY.
15	5870328	-	RL, HYD TUBE, KICK BAR EXTEND CROSS, CS, CTM	1
16	5870329	-	RL, HYD TUBE, KICK BAR RETRACT CROSS, CS, CTM	1
17	5870330	-	RL, HYD TUBE, TG CYL CROSS, CS, CTM	1
18	5870331	-	RL, HYD TUBE, KICK BAR EXTEND CROSS, SS, CTM	1
19	5870332	-	RL, HYD TUBE, KICK BAR RETRACT CROSS, SS, CTM	1
20	5870333	-	RL, HYD TUBE, TG CYL CROSS, SS, CTM	1

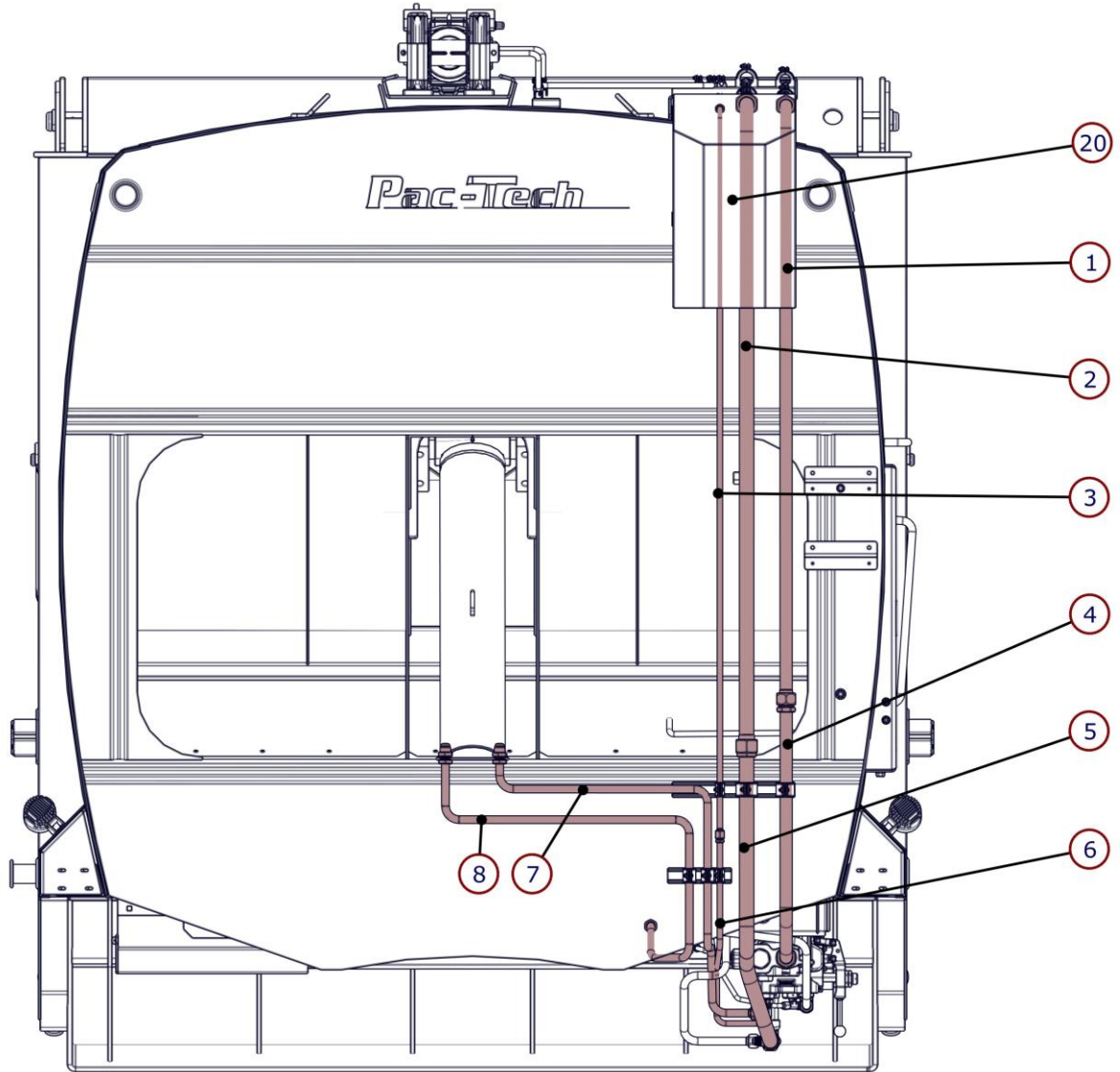
ROOF HYDRAULIC TUBES



38 HYDRAULICS

ITEM NO.	PTM #	MTM #	DESCRIPTION	QTY.
1	5870270	605916	RL, HYD TUBE, #20, FRT BODY TOP	1
2	5870271	602604	RL, HYD TUBE, #24 FRT BODY TOP	1
3	5870272	605812	RL, HYD TUBE #8 F BODY TO T BODY	1
4	5870292	605827	RL, HYD TUBE, #20 25YD TOP BODY	1
	5870291	605822	RL, HYD TUBE, #20 20YD TOP BODY	1
5	5870288	605826	RL, HYD TUBE, #24 25YD TOP BODY	1
	5870287	605821	RL, HYD TUBE, #24 20YD TOP BODY	1
6	5870319	1587795	RL, HYD TUBE, #8 25YD TOP BODY	1
	5870318	1587794	RL, HYD TUBE, #8 20YD TOP BODY	1
7	5870293	605813	RL, HYD TUBE, REEVING CYL RETRACT	1
8	5870294	605814	RL, HYD TUBE, REEVING CYL EXTEND	1
9	705021	1165011	CLAMP-CUSHA, #8, 1/2"	11
10	705022	1165012	CLAMP-CUSHA, #12, 3/4"	2
11	705024	1165015	CLAMP-CUSHA, #20, 1 1/4"	5
12	705044	1165016	CLAMP-CUSHA, #24, 1 1/2"	5

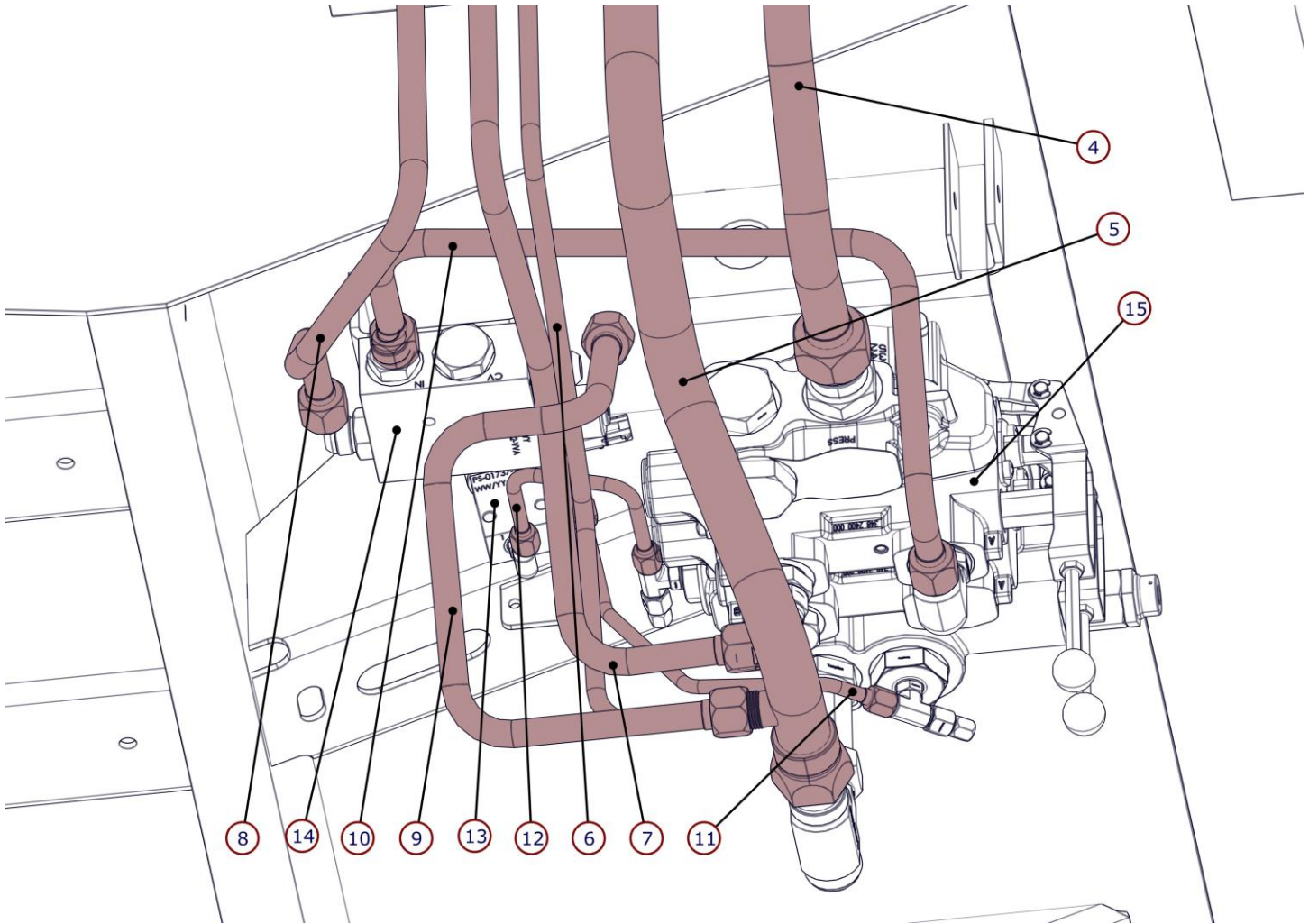
FRONT OF BODY HYDRULIC TUBES



ITEM NO.	PTM #	MTM #	DESCRIPTION	QTY.
1	5870270	605916	RL, HYD TUBE, #20, FRT BODY TOP	1
2	5870271	602604	RL, HYD TUBE, #24 FRT BODY TOP	1
3	5870272	605812	RL, HYD TUBE #8 F BODY TO T BODY	1
4	5870273	1137937	RL, HYD TUBE, EJR FORCE LIMITER	1
5	5870274	1137938	RL, HYD TUBE, EJR FORCE LIMITER	1
6	5870334	-	RL, HYD TUBE, VLV TO FRT BODY	1
7	5870277	605800	RL, HYD TUBE, #12, EJR RETRACT	1
8	5870276	1137939	RL, HYD TUBE, EJR FORCE LIMITER	1
16	705021	1165011	CLAMP-CUSHA, #8, 1/2"	11
17	705022	1165012	CLAMP-CUSHA, #12, 3/4"	2
18	705024	1165015	CLAMP-CUSHA, #20, 1 1/4"	5
19	705044	1165016	CLAMP-CUSHA, #24, 1 1/2"	5
20	5070998	-	RL, FRONT PIPE COVER WLD T	1
21	5870252	-	RL, BODY TOP WIRING BULKHEAD, DEUTSCH	1

HYDRAULICS 39

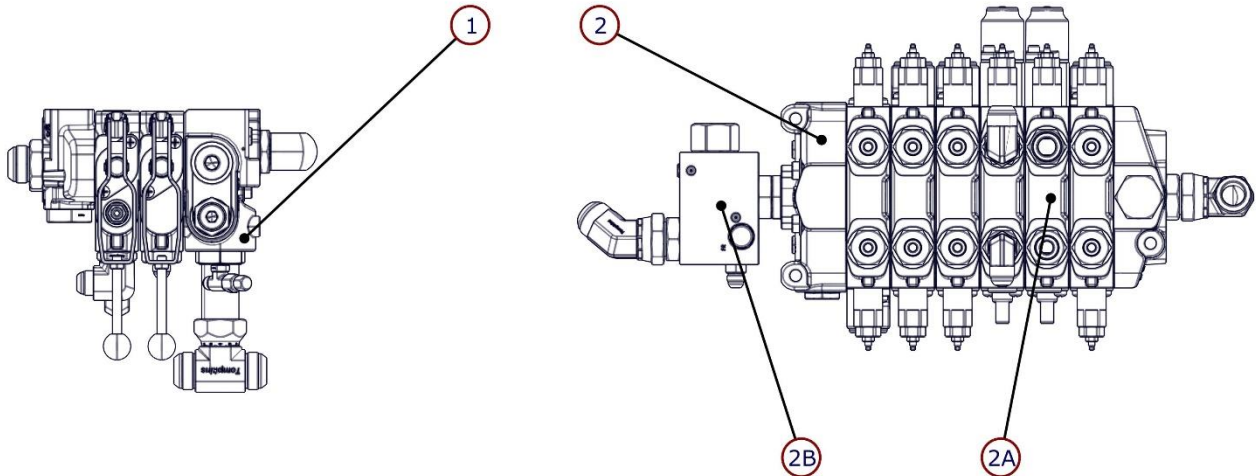
FRONT VALVE HYDRAULIC TUBES



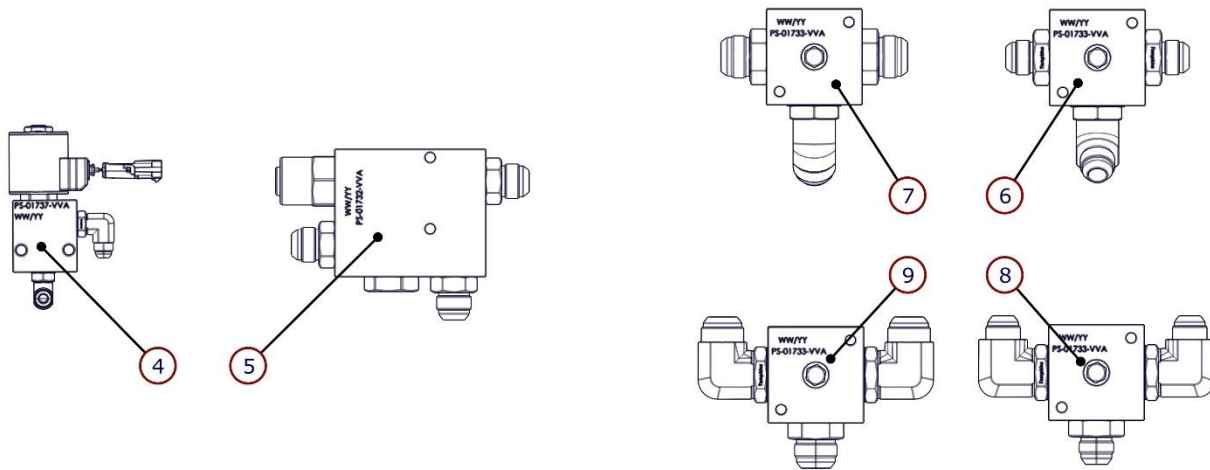
40 HYDRAULICS

ITEM NO.	PTM #	MTM #	DESCRIPTION	QTY.
4	5870273	1137937	RL, HYD TUBE, EJR FORCE LIMITER	1
5	5870274	1137938	RL, HYD TUBE, EJR FORCE LIMITER	1
6	5870334	-	RL, HYD TUBE, VLV TO FRT BODY	1
7	5870277	605800	RL, HYD TUBE, #12, EJR RETRACT	1
8	5870276	1137939	RL, HYD TUBE, EJR FORCE LIMITER	1
9	5870278	1137935	RL, HYD TUBE, EJR FORCE LIMITER	1
10	5870279	1137936	RL, HYD TUBE, EJR FORCE LIMITER	1
11	5870280	605807	RL, HYD TUBE #6 VLV TO N/O	1
12	5870281	605806	RL, HYD TUBE #6 UNLODR TO N/O VLV	1
13	9450043	601450	N.O. VALVE ASSEMBLY	1
14	9450007	602131	EJECTOR FORCE LIMITER	1
15	9450500	605710	VALVE - RL, VA35 2-SECTION TG/EJR	1
-	9650013	-	HANDLE KIT - 2-SECTION, VA35 VALVE	A/R

HYDRAULIC VALVES & BLOCKS



ITEM NO.	PTM #	MTM #	DESCRIPTION	QTY.
1	9450500	605710	VALVE - RL, VA35 2-SECTION TG/EJR	1
-	9650013	-	HANDLE KIT - 2-SECTION, VA35 VALVE	A/R
2	9450509	-	VALVE - RL, VA35, 5 SECTION W/DIVERTER	A/R
-	9450511	-	VALVE - RL, VA35, 6 SECTION W/DIVERTER	A/R
2A	9450501	605713	VALVE- RL, VA35, 5 SECTION	-
-	9450502	605731	VALVE- RL, VA35, 6 SECTION	-
2B	9450504	-	BLOCK - RL, DIVERTER	-



ITEM NO.	PTM #	MTM #	DESCRIPTION	QTY.
4	9450043	0601450	N.O. VALVE ASSEMBLY	1
-	9350350	-	COIL - RL, N.O. VALVE	A/R
5	9450007	0602131	VALVE - RL, EJECTOR FORCE LIMITER	1
6	9450550	NA	BLOCK - RL, SLIDE TEE, #12, MJIC, 45 DEG	1
7	9450551	NA	BLOCK - RL, SLIDE TEE, #16, MJIC, 45 DEG	1
8	9450552	NA	BLOCK - RL, SWEEP TEE, #12, MJIC, 90 DEG	1
9	9450553	NA	BLOCK - RL, SWEEP TEE, #16, MJIC, 90 DEG	1

Pac-Tech[®]
A DIVISION OF CON-TECH MANUFACTURING, INC.



LIMITED REFUSE PACKER WARRANTY

Pac-Tech Manufacturing, Inc., a Minnesota corporation, warrants components manufactured by Pac-Tech to be free from defects in materials and workmanship under normal use and service for a period of 90 days. Pac-Tech's obligation under this warranty is limited to repairing and/or replacing, at Pac-Tech's opinion, any parts which are returned to Pac-Tech's factory at Dodge Center, MN, 55927. Transportation charges must be paid by the customer. Parts must be returned within 30 days after the date of delivery to customer. This warranty covers only parts which, upon examination by Pac-Tech, are found to be defective in material or workmanship. Such repair and/or replacement of parts under this limited warranty will be made by Pac-Tech without charge for such parts. Under no circumstances will Pac-Tech be under any further liability with respect to such warranty. This warranty is non-transferable and applies to the original purchaser only.

The hydraulic pump is warranted against defects in material and workmanship under normal use and service for a period of 1 year after the date of delivery to the customer. Leaks are not covered under this limited warranty. Lubricants and filters must be changed initially at 100 hours of in-service time, then every 6 months or 1000 hours, whichever comes first. Lubricants and filters must be of OEM specifications and approved by Pac-Tech. Service records must be produced upon request.

The hydraulic valves, cartridges and all further subcomponents therein, are warranted against defects in material and workmanship under normal use and service for a period of 6 months after the date of delivery to the customer. All electronic components which include, but are not limited to, modules, switches, coils, lights, and wire harnesses are warranted against defects in material and workmanship under normal use and service for a period of 6 months after the date of delivery to the customer.

Hydraulic cylinders are warranted against defects in material and workmanship under normal use and service for a period of 6 months after date of delivery to customer.

Components not listed above are warranted for a period of 6 months from date of delivery to customer. Remanufactured components will be utilized for warranty replacement when and where available. This limited Refuse Packer Warranty shall not apply to any equipment that, upon review, is judged to be misused, neglected, has been involved in accidents, or which has been altered or repaired without Pac-Tech's prior knowledge and consent.

PAC-TECH WILL NOT BE RESPONSIBLE (FINANCIALLY OR OTHERWISE) FOR IN-WARRANTY REPAIRS MADE IN THE FIELD BY PERSONNEL OTHER THAN FROM PAC-TECH WITHOUT PRIOR APPROVAL BY PAC-TECH MANUFACTURING.

YOUR PAC-TECH REFUSE PACKER IS DESIGNED, BUILT AND MEANT TO BE USED WITH OEM PRODUCTS USED BY PACTECH. THIS LIMITED WARRANTY WILL BE VOID IF THE PAC-TECH PRODUCTS ARE MODIFIED OTHER THAN AS DONE AT PAC-TECH'S FACTORY, UNLESS AUTHORIZED BY PAC-TECH IN WRITING. USE OF PARTS AND ASSEMBLIES FROM ANOTHER MANUFACTURER AS SUBSTITUTES FOR OEM PRODUCTS WILL ALSO VOID THE LIMITED REFUSE PACKER WARRANTY. THERE WILL BE NO WARRANTY ON USED PARTS.

IN NO CASE SHALL PAC-TECH MANUFACTURING BE LIABLE FOR CONSEQUENTIAL, INCIDENTAL, SPECIAL, OR INDIRECT DAMAGES OF ANY KIND.

PAC-TECH MAKES NO OTHER EXPRESSED OR IMPLIED WARRANTIES OF FITNESS OR MERCHANTABILITY OR ANY OTHER WARRANTIES, EITHER EXPRESSED OR IMPLIED. ANY IMPLIED WARRANTY OF MERCHANTABILITY OR FITNESS FOR A PARTICULAR PURPOSE WHICH EXCEEDS THE FORGOING WARRANTY IS HEREBY DISCLAIMED BY PAC-TECH. THERE ARE NO WARRANTIES WHICH EXTEND BEYOND THE DESCRIPTION ON THE FACE HEREOF.

The customer's exclusive remedy for breach of warranty as a result of defects in material and workmanship shall be as set forth herein. Any action for breach of warranty must be commenced within one year after the cause of action shall accrue, and no such action may be maintained which is not commenced within such period. Pac-Tech neither assumes nor authorizes any other persons to assume for it any liability in connection with its equipment.

Pac-Tech[®]

A DIVISION OF CON-TECH MANUFACTURING, INC.

